

digitalhealth

REWired
BIRMINGHAM 12-13 MARCH 2024

Headline Sponsors:



Sharon Toora

Lead Arrhythmia Nurse Specialist,
Essex Cardiothoracic Centre,
Mid and South Essex University FT Trust



**PATIENT
ENGAGEMENT
STAGE**

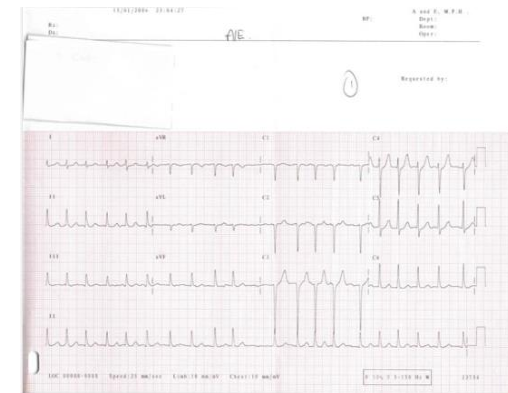
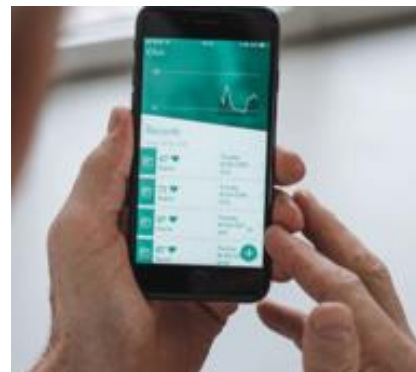
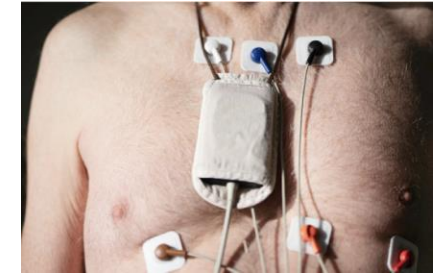
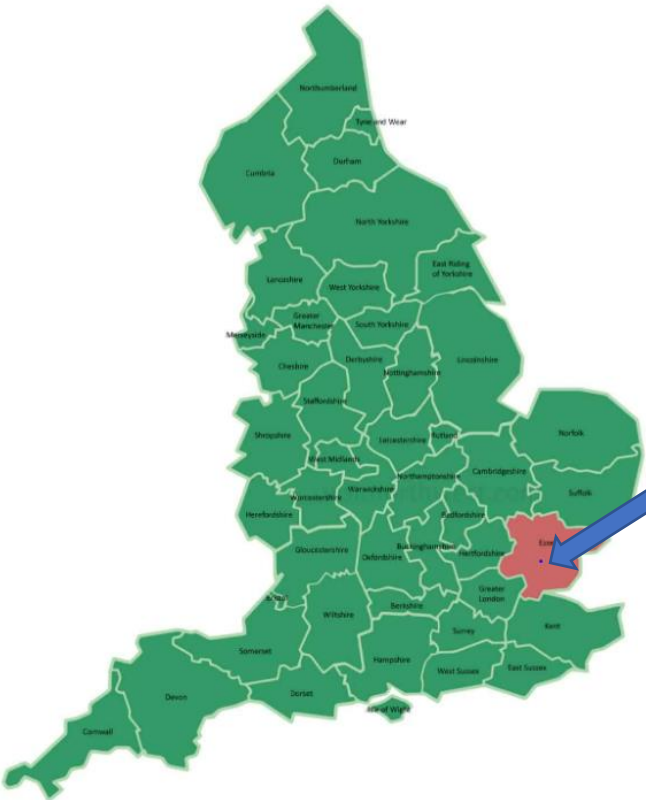
Stage Sponsor:



PATIENTS KNOW BEST®
THE PATIENT'S COMPANY

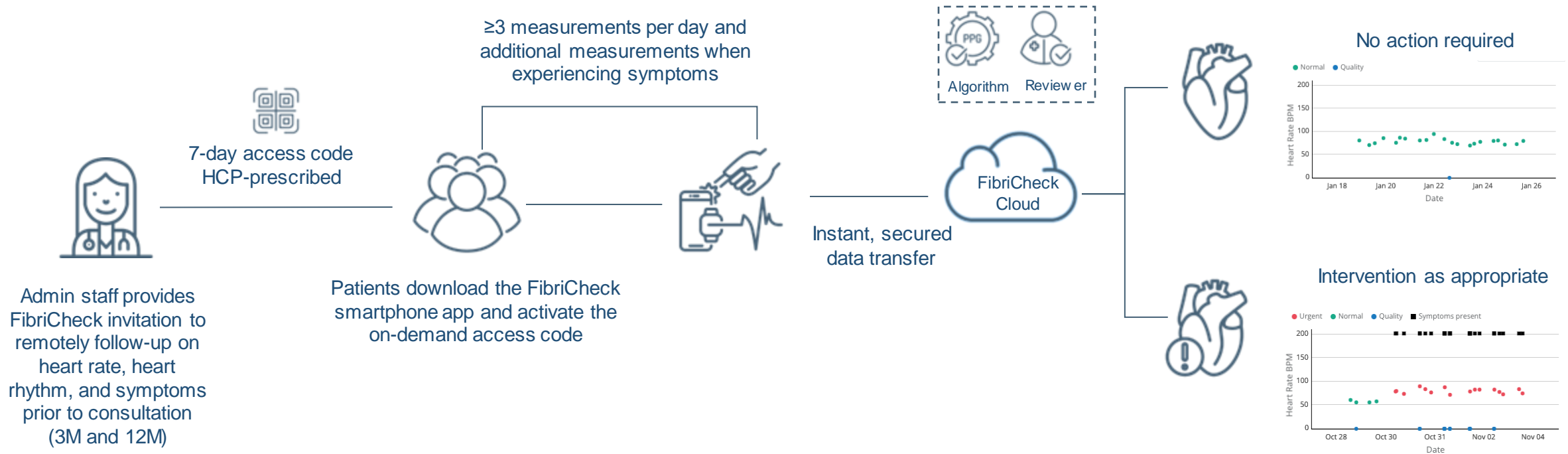
Transformation of our Atrial Fibrillation follow up pathway using FibriCheck – a digital smartphone app

AF management through remote monitoring using FibriCheck



RM Digital Pathway

Empowering patients post-AF ablation through nurse-led virtual clinics



147 patients onboarded, with AF recurrence in 39 patients (26.5%)

Estimated avoidance of 147 ECGs and 55 seven-day Holter ECGs

Estimated net savings of £19,040 and 73.5 outpatient clinic hours

Clinician Report

Access patient data via FibriCheck Dashboard

Global view

1. Distribution of the type of measurements
2. Compliance
3. Overview heart rate and heart rhythm over time
4. Symptom rhythm correlation



Conclusion

Transformation of our nurse-led virtual clinics

