



# Sustainability for Smart Health

**Conference:** Digital Health Rewired  
**Date:** Tuesday, March 12, 2024  
**Presentor:** Dr. Piyush Mahapatra

# Agenda

- 1 Disclosures and Background
- 2 Introduction
- 3 Exploring Sustainable Models of Care
- 4 Redefining Healthcare Delivery: A Greener NHS

# Disclosures and Background



## Piyush Mahapatra

MA (Cantab) MBBS FRCS

**Chief Innovation Officer**, Open Medical

**Consultant Trauma & Orthopaedic Surgeon**, West Hertfordshire Teaching Hospitals NHS Trust

**Divisional Digital and Innovation Lead**, West Hertfordshire Teaching Hospitals NHS Trust

**National Innovation Fellow**, National Health Service

**Member**, ABHI Orthopaedics and Sustainability Groups

# About Open Medical

More than

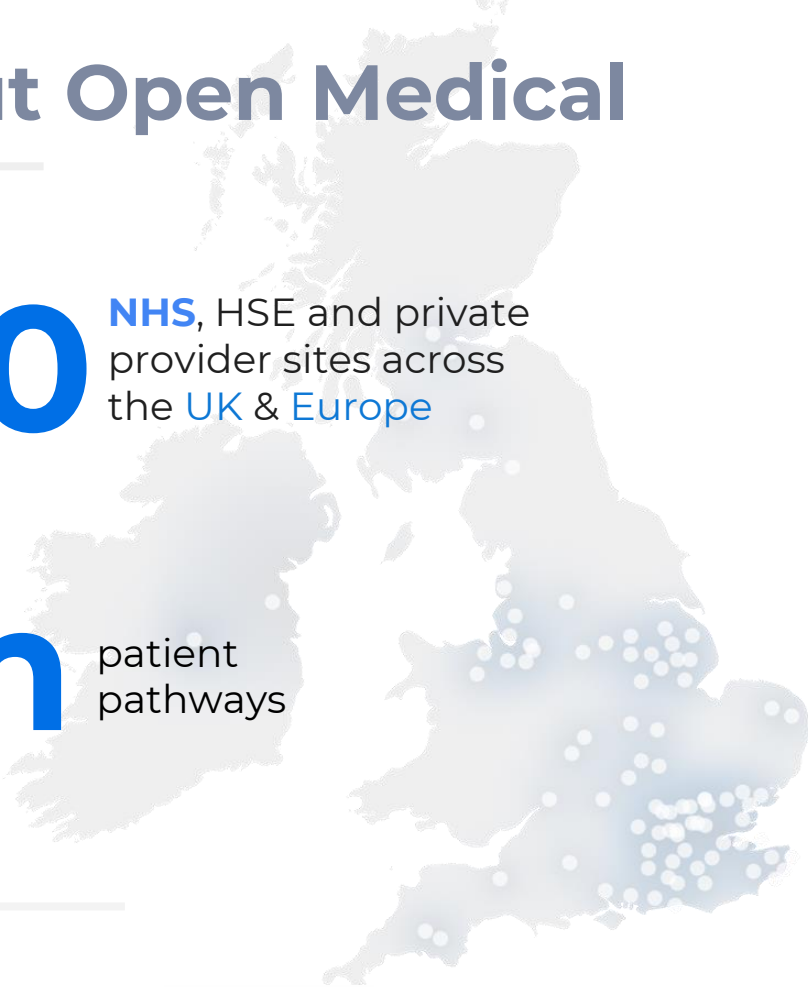
# 170

NHS, HSE and private provider sites across the UK & Europe

Over

# 3m

patient pathways



ABHI



FOR HEALTHCARE LEADERS  
**HSJ**  
AWARDS



# Sustainability for Smart Health



**Complex Care Pathways**



**Disjointed Processes**



**Increasing Demand**



**Lack of Information & Education**

# Agenda

- 1 Disclosures and Background
- 2 Introduction
- 3** Exploring Sustainable Models of Care
- 4 Redefining Healthcare Delivery: A Greener NHS

# Exploring Sustainable Models of Care

## Trauma



## Elective Surgery

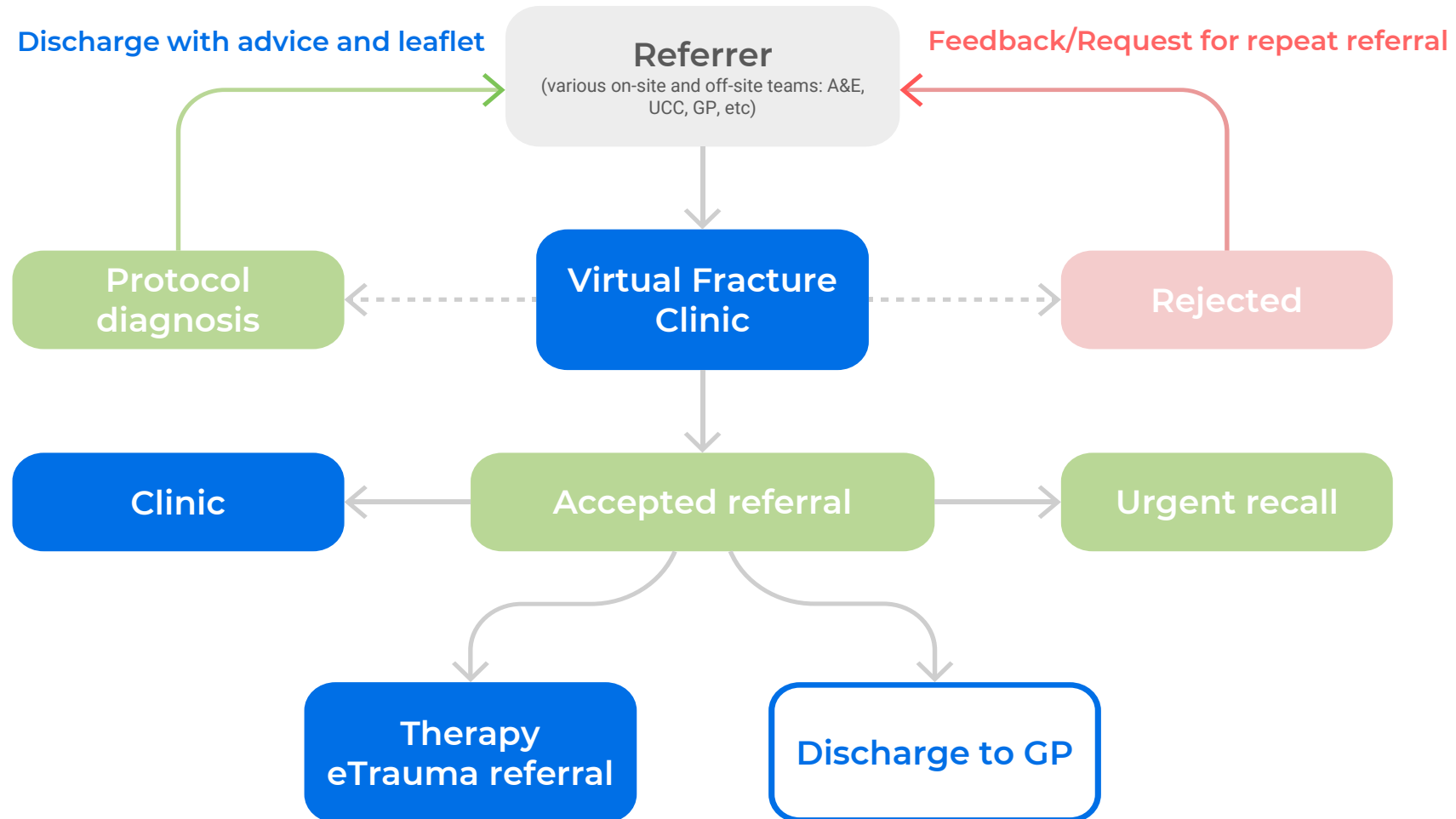


## Oncology



# Exploring Sustainable Models of Care






## Model of Care #1: Pathpoint eTrauma & Virtual Fracture Clinic (VFC)





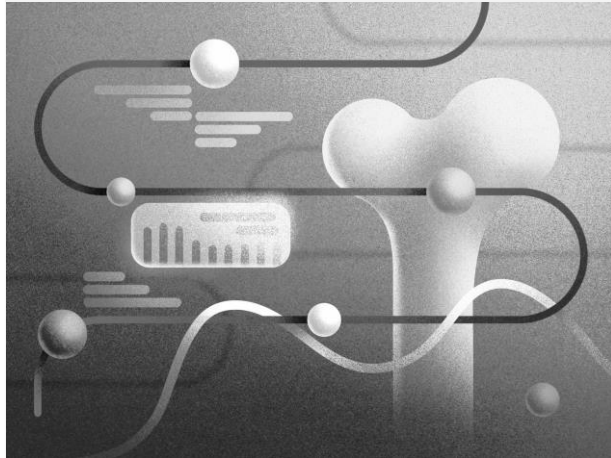
# Exploring Sustainable Models of Care

## Model of Care #1: Pathpoint eTrauma & Virtual Fracture Clinic (VFC)

-  In total, they saved **118,906 kg** of CO<sub>2</sub>e (equivalent to driving to the moon and back)
-  Avoided **12,957** unnecessary patient visits
-  Reduced operational energy consumption (heating, cooling, etc.) saved **72,268 kg** of CO<sub>2</sub>e
-  Reduced patient travel saved **46,164 kg** of CO<sub>2</sub>e
-  Reduced paper use saved **474 kg** of CO<sub>2</sub>e

# Exploring Sustainable Models of Care

Trauma



Elective Surgery

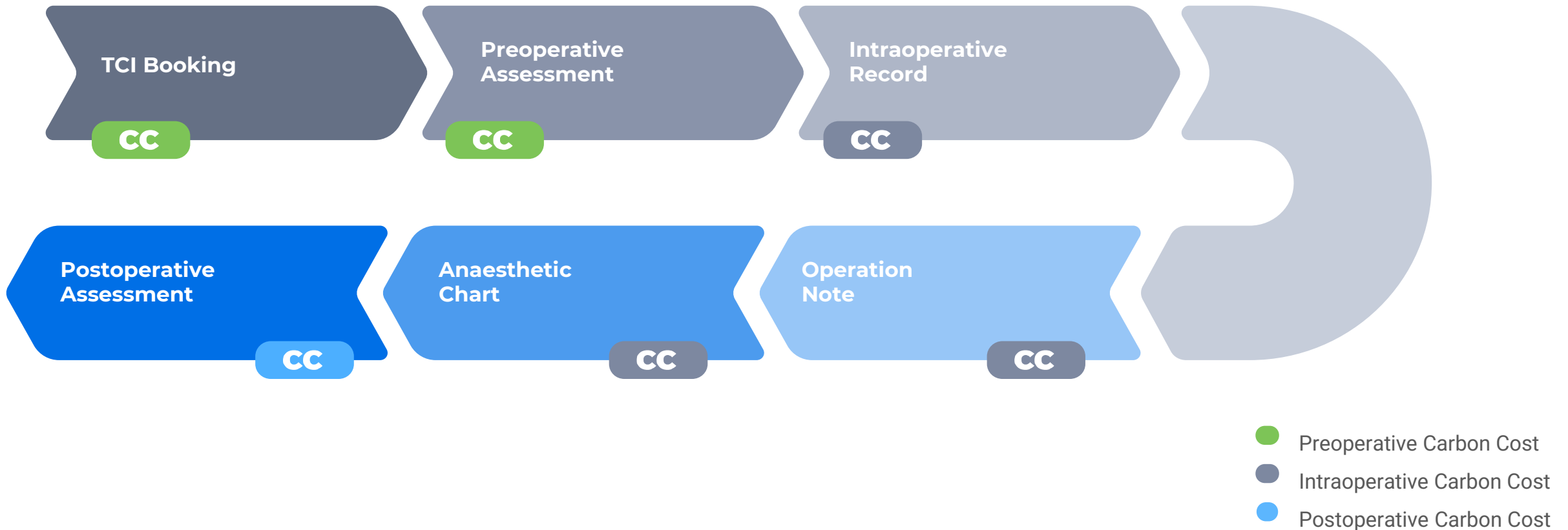


Oncology

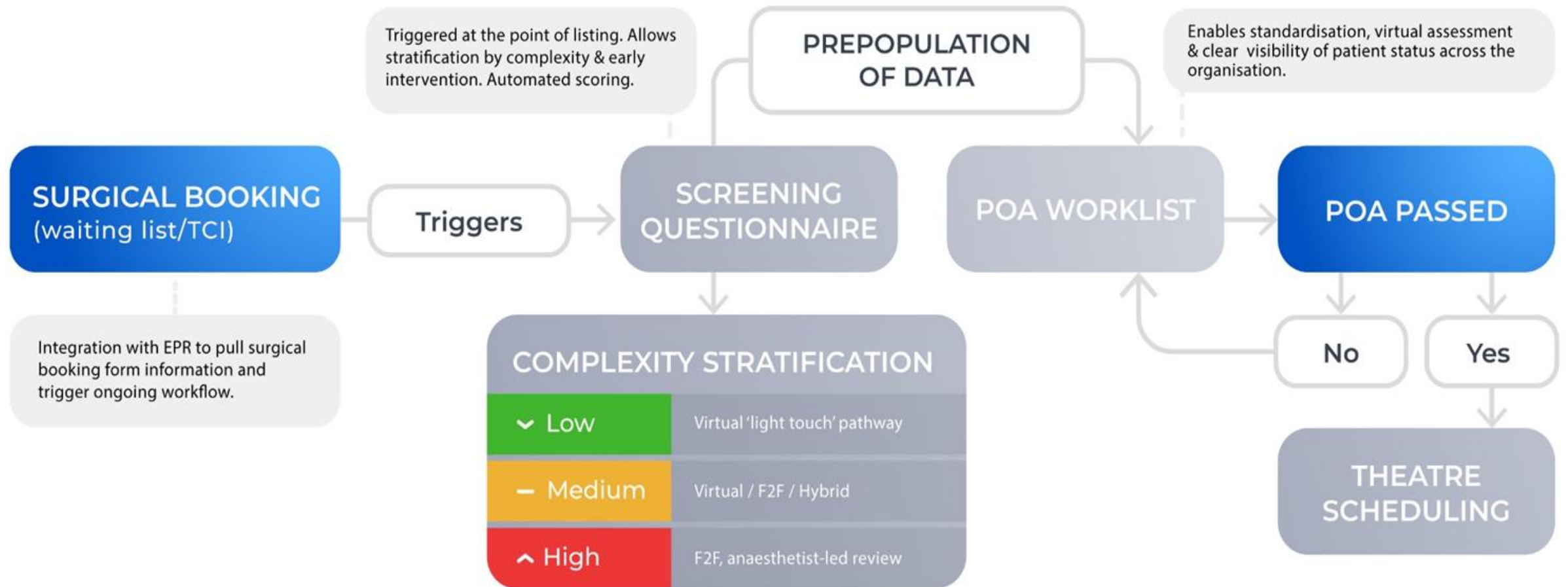


# Exploring Sustainable Models of Care

## Model of Care #2: Streamlined Elective Surgery

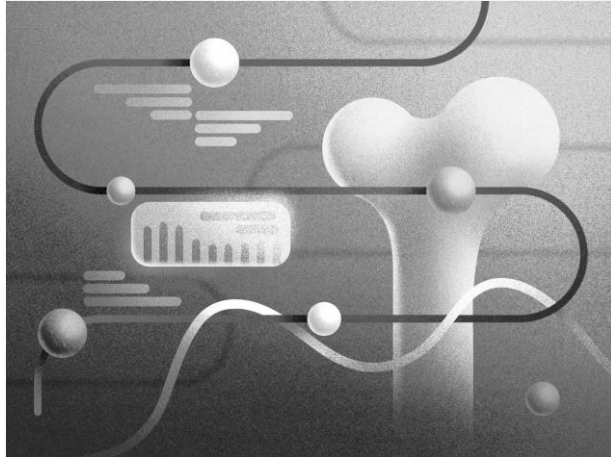


# Exploring Sustainable Models of Care



# Exploring Sustainable Models of Care

Trauma



Elective Surgery



Oncology



# Exploring Sustainable Models of Care

## Model of Care #3: Pathpoint eDerma

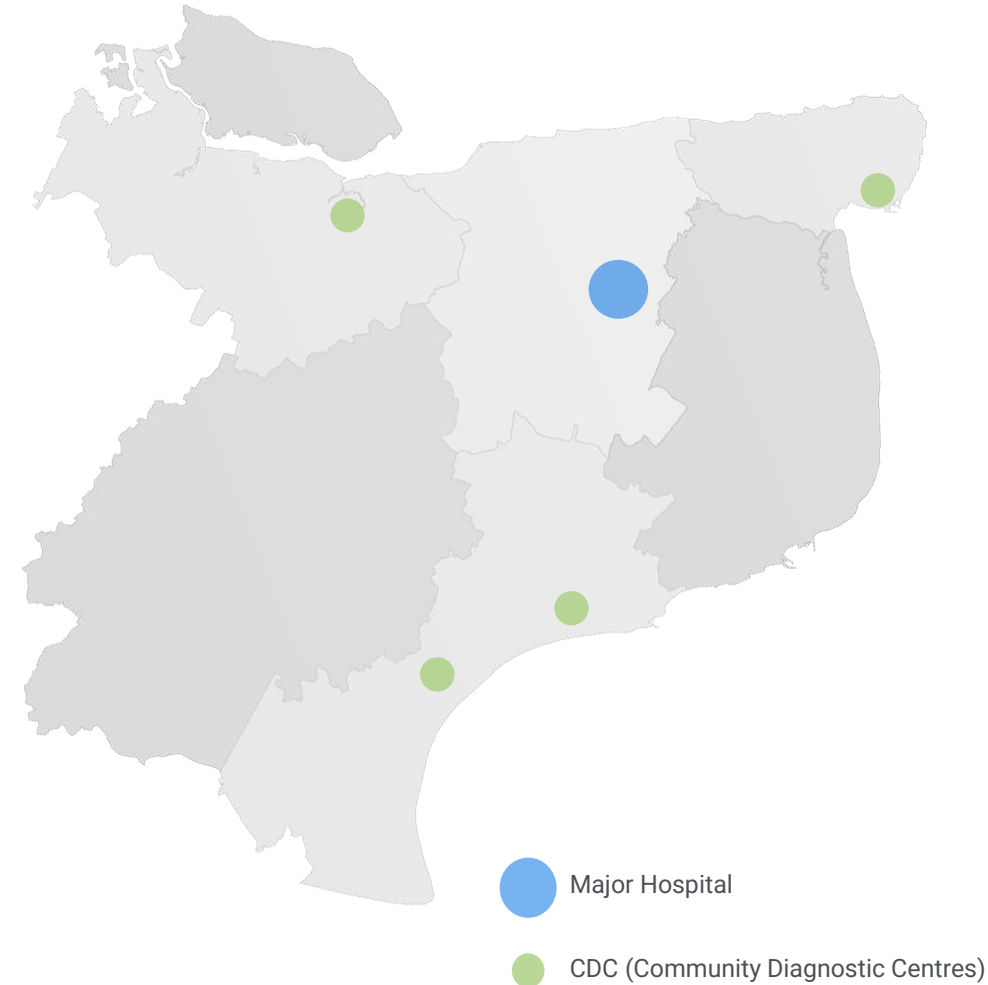


**86%** supportive

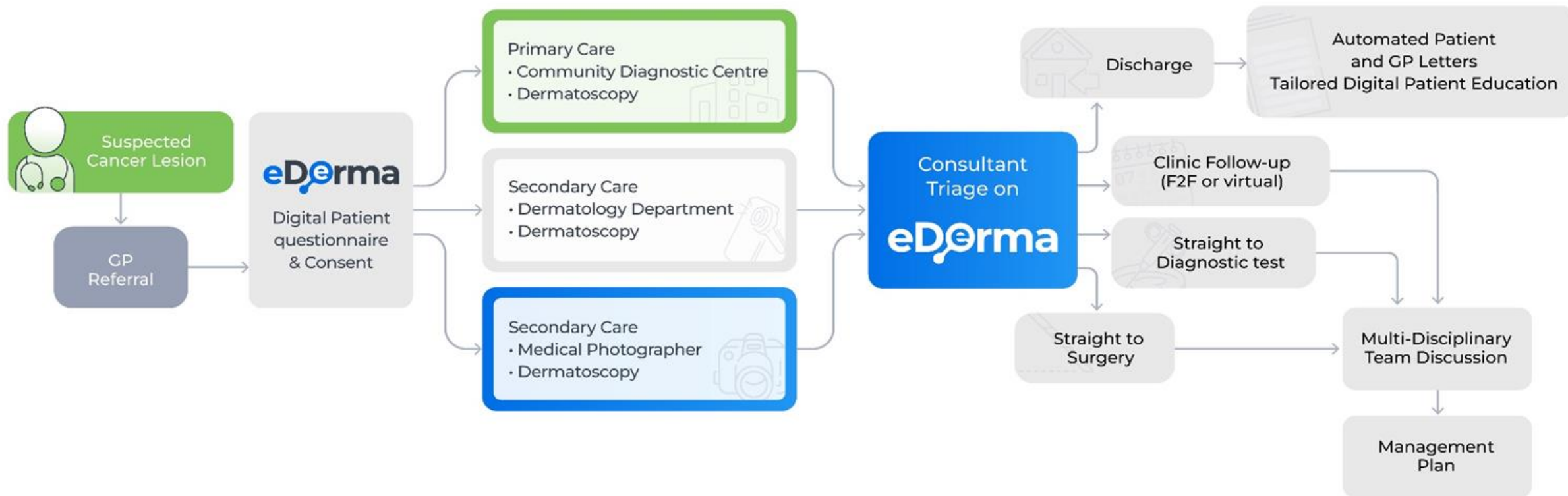
**Accessible care** to deprived areas through a community based model



**Health equality** by catering to patients of diverse sexual orientations, primary languages, and ethnic backgrounds



# Exploring Sustainable Models of Care



# The Outcomes

## Referral to Diagnosis Timeline Analyses

On average, eDerma patients were diagnosed

**6.4 DAYS FASTER**

than those managed without **eDerma**.

The majority of patients were diagnosed

**14 DAYS FASTER**

## Health Economic Evaluation

**£32 saved** (per referral)

**18% reduction** in procedures

**£16 million**

**saved** / 500,000 referrals  
Per annum



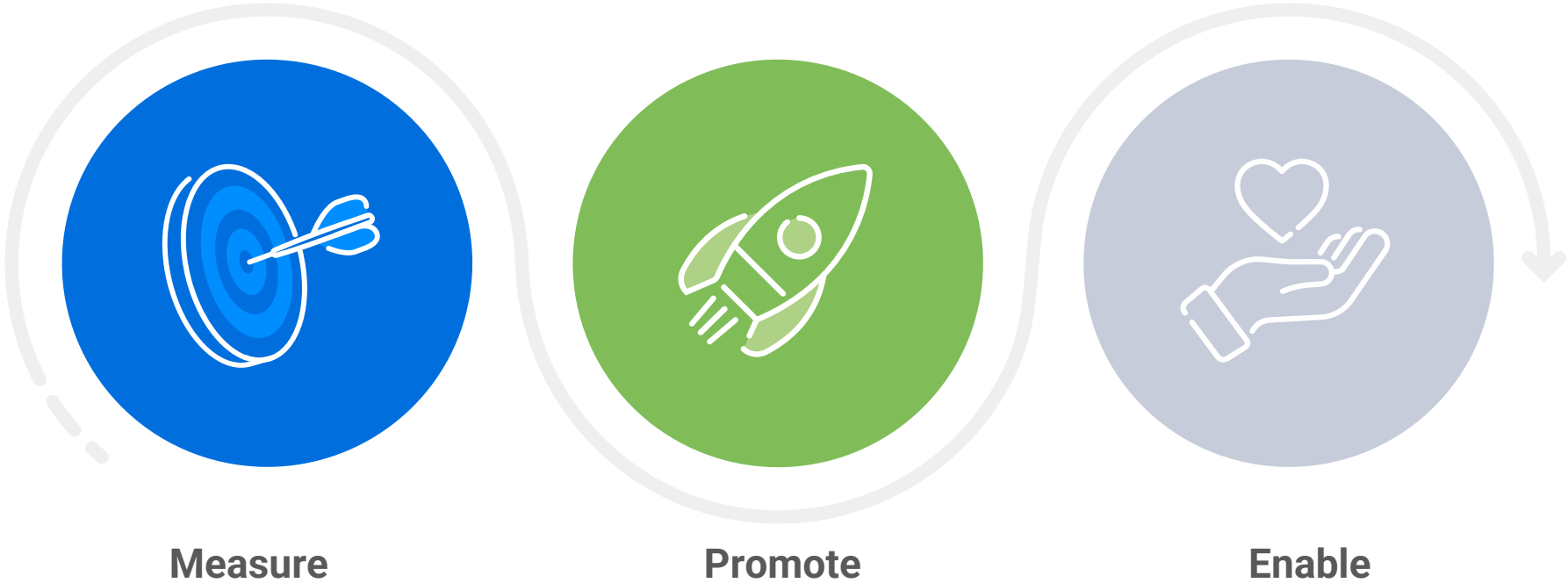


# Agenda

- 1 Disclosures and Background
- 2 Introduction
- 3 Exploring Sustainable Models of Care
- 4 Redefining Healthcare Delivery: A Greener NHS**

# Redefining Healthcare Delivery: Sustainable Care Pathways

## Sustainability Principles



# Redefining Healthcare Delivery: Sustainable Care Pathways



Measure



Automate



NHS Digital Dashboards



Procurement Data



Activity / Operational Data



Technology / Digital Systems



Health Sector Led Groups

# Redefining Healthcare Delivery: Sustainable Care Pathways



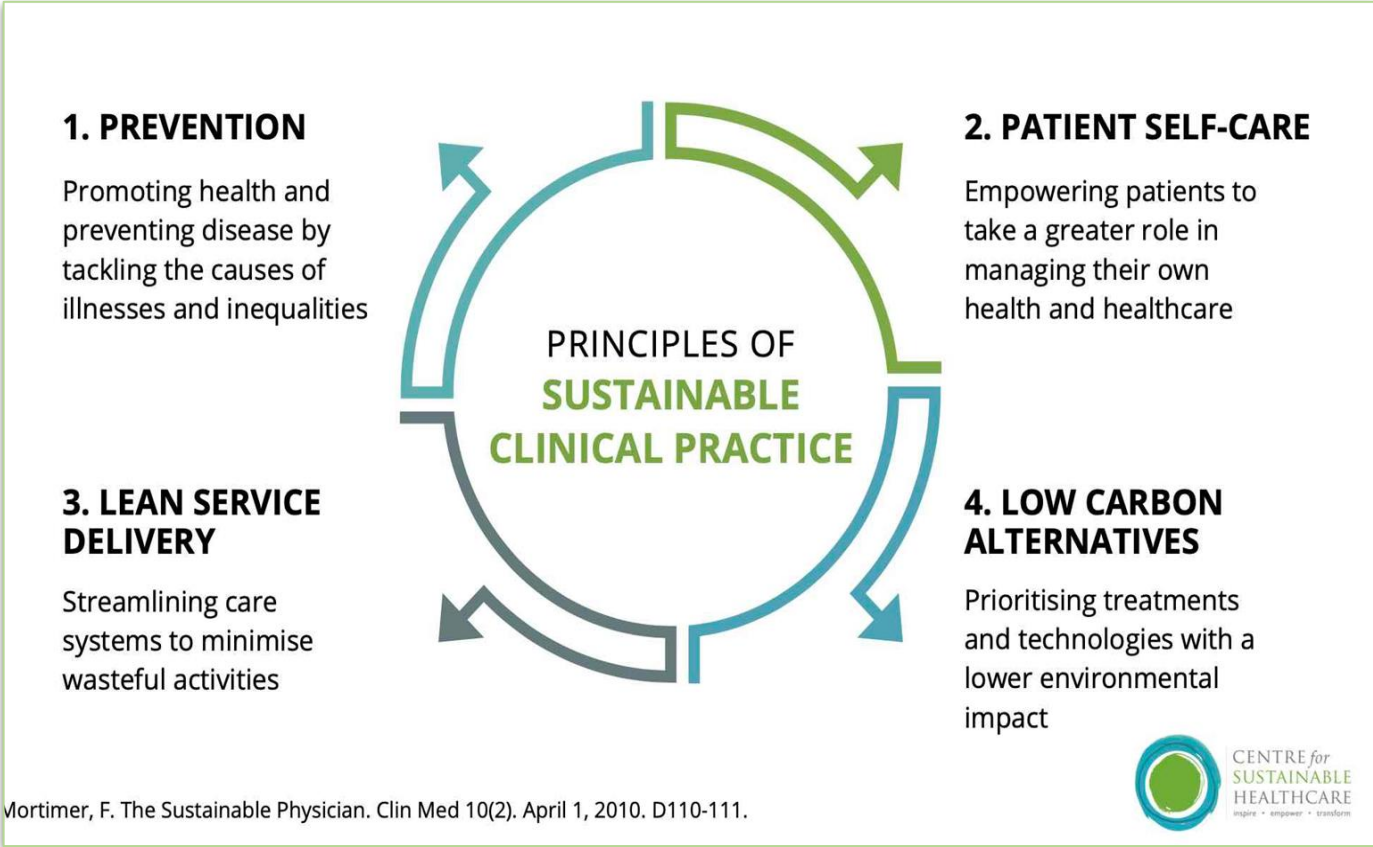
Promote



SusQI Principles

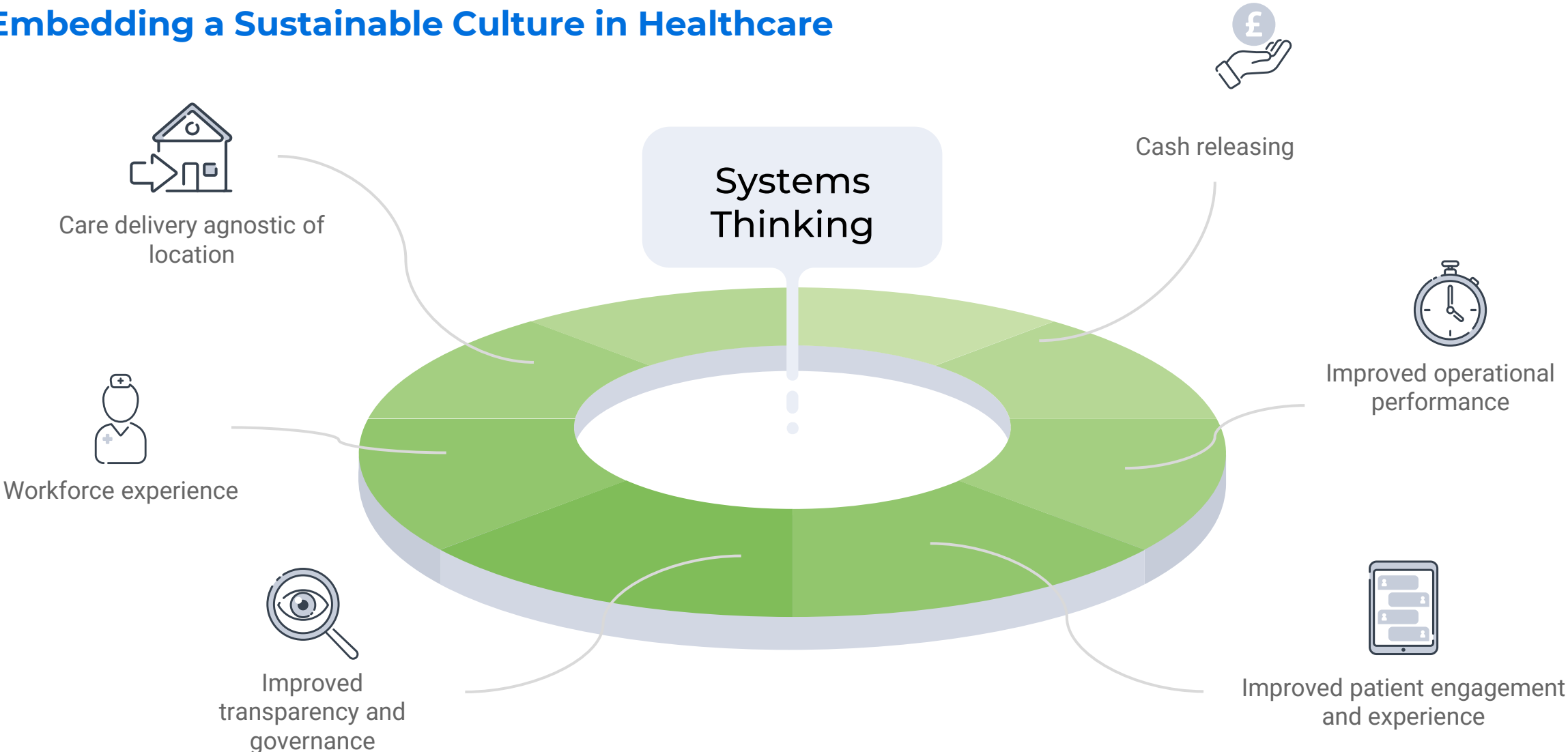


Utilise your workforce



# Redefining Healthcare Delivery: Sustainable Care Pathways

## Embedding a Sustainable Culture in Healthcare



# Redefining Healthcare Delivery: Sustainable Care Pathways



Enable

Help and support out there!

Use the right technologies

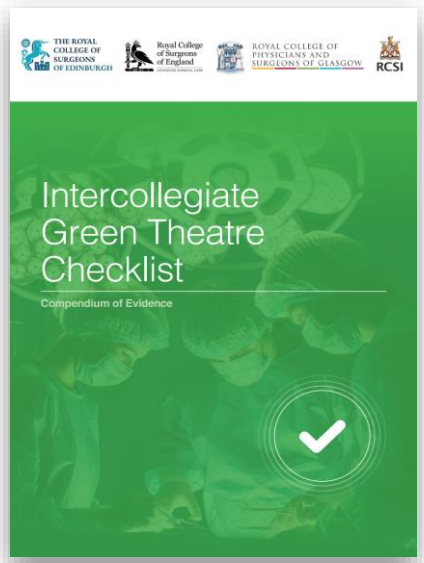
Local, regional, and national

Industry

Third sector

Centre for Sustainable Healthcare

Sustainable Healthcare Coalition



# Redefining Healthcare Delivery: Sustainable Care Pathways



# Thank you!

piyush@openmedical.co.uk

## Address

CP House, 97-107 Uxbridge Road,  
London, W5 5TL

## Phone Number

0203 475 2955

## Email Address

info@openmedical.co.uk

## Social Media

X: @OpenMedicalLtd

Linkedin: [linkedin.com/openmedical](https://www.linkedin.com/company/openmedical)

# OpenMedical