

digitalhealth

REWIRED
BIRMINGHAM 12-13 MARCH 2024

Headline Sponsors:



Dawn Greaves

Associate Director of Digital Transformation,
Leeds Community Healthcare NHS Trust



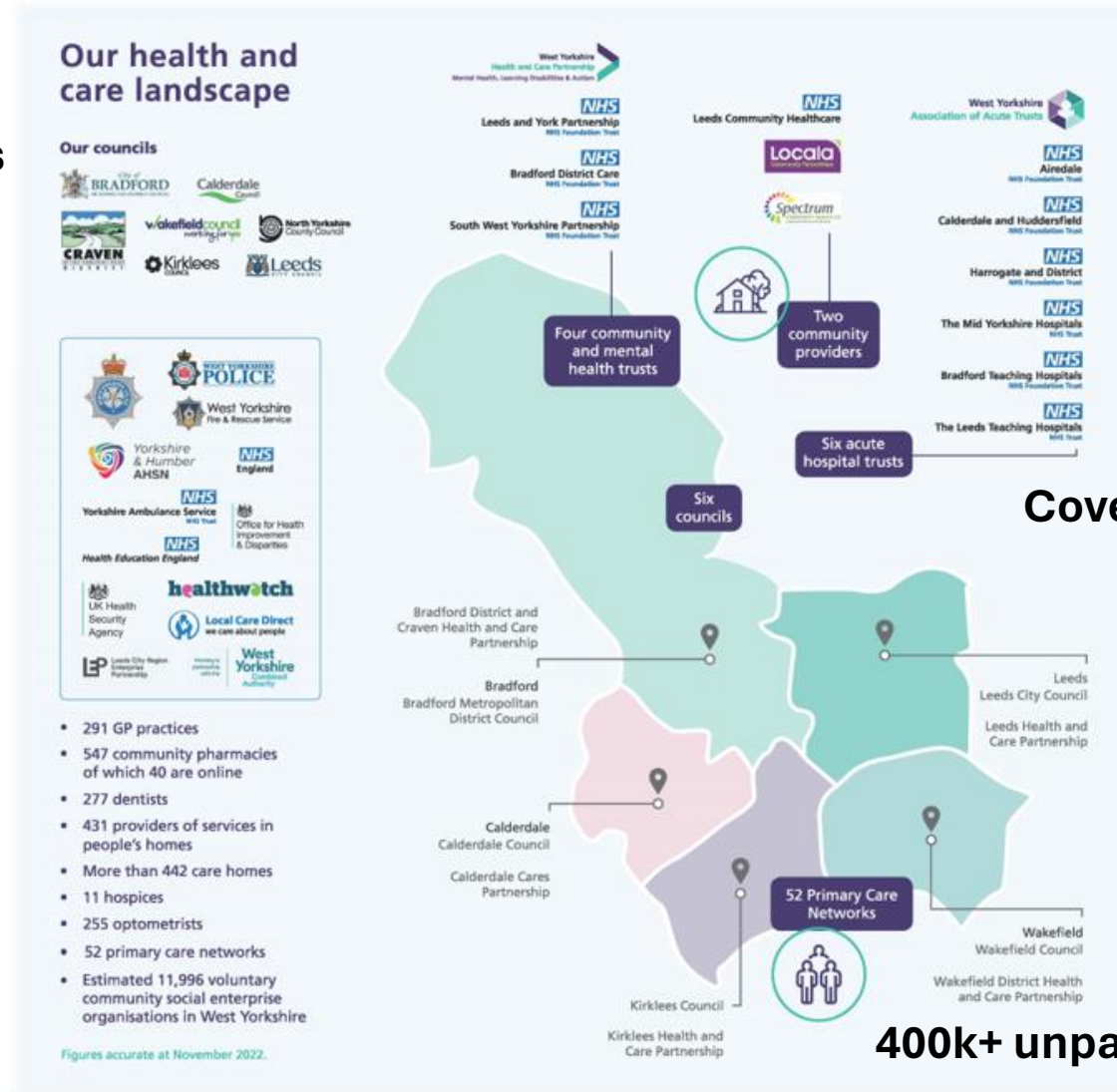
**INTEGRATED
CARE
STAGE**

Stage Sponsor:



West Yorkshire Landscape

100k+ staff/colleagues

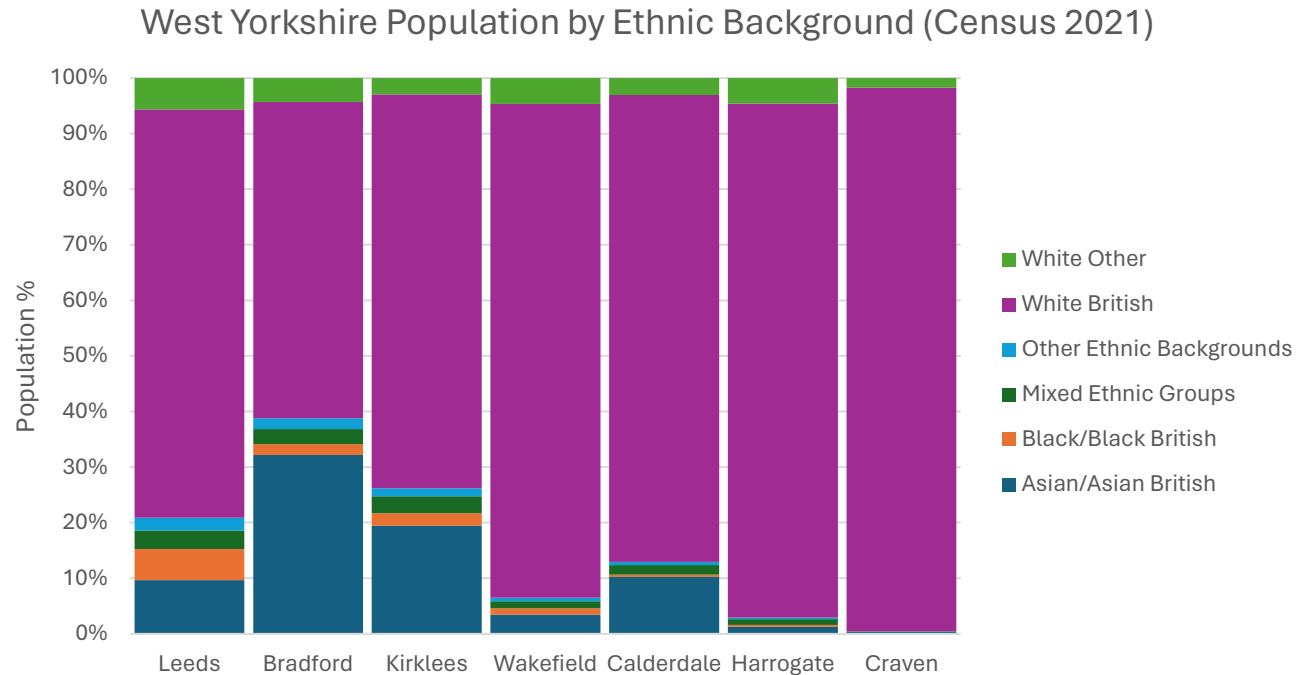


Covering 2.4m population

150k+ volunteers

400k+ unpaid carers

West Yorkshire Ethnicity



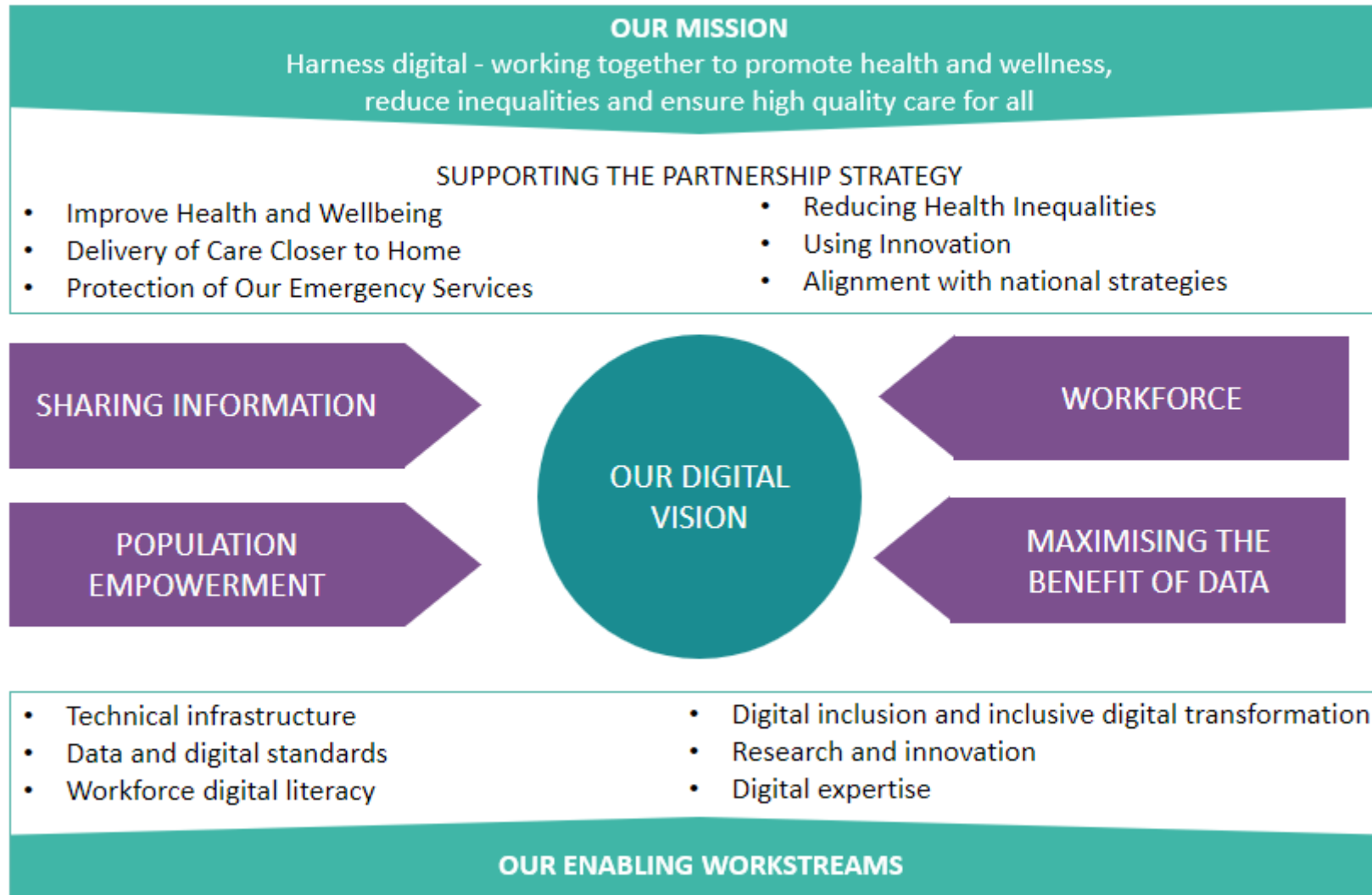
Variation between places

Overall 19.6% of residents are from a BAME background

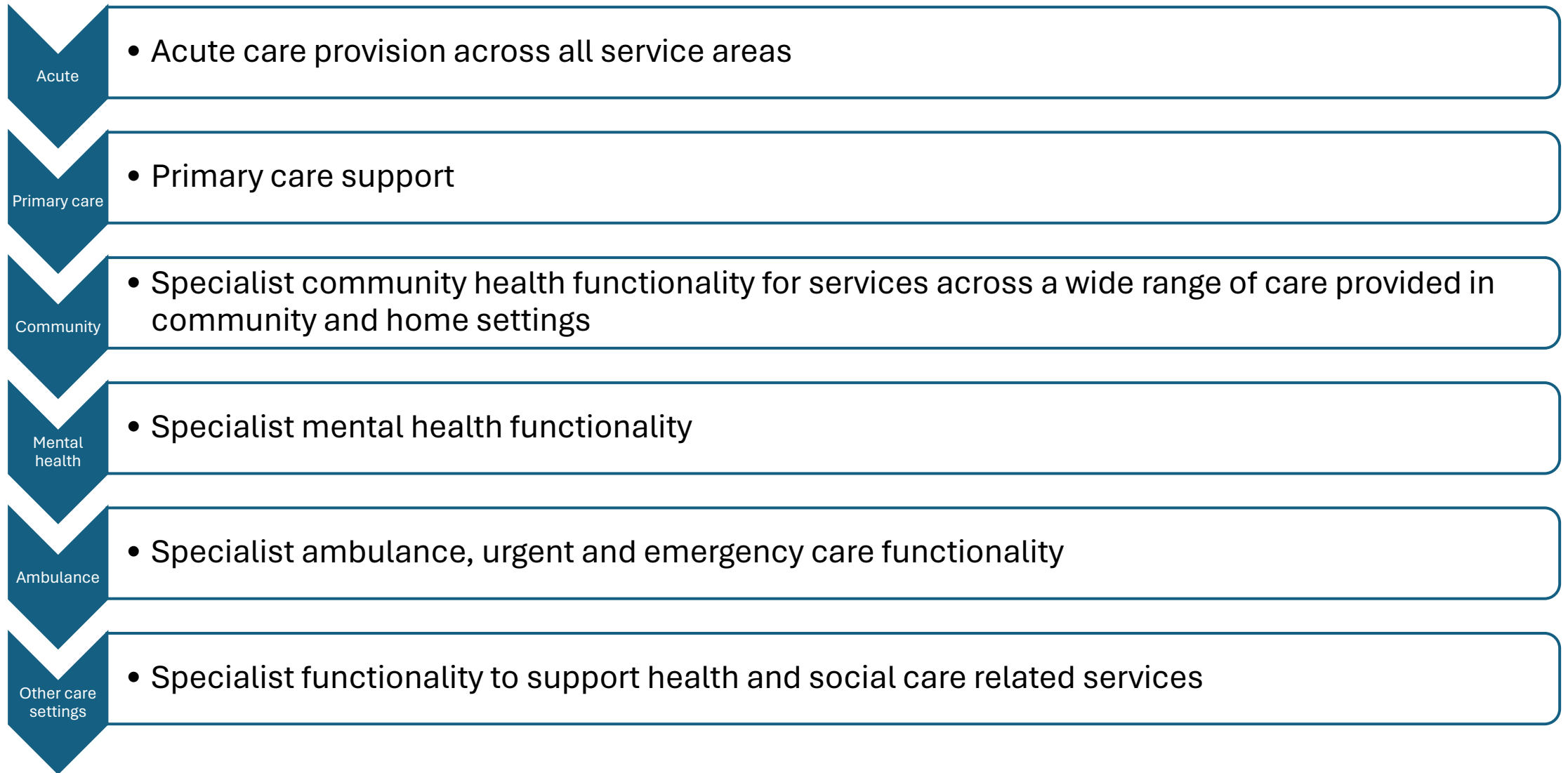
Bradford has the highest proportion of BAME groups (31.2%)

Craven has the lowest proportion of BAME groups (3.6%)

Our Digital and Data Strategy



What does Convergence look like across a system?



Achievements

- EPR convergence to 2 acutes – 2 community and mental health and 2 for primary care
- Provider collaborative well established and delivering:-
 - Consistent PACS imaging with sharing capabilities
 - Radiology home working
 - Single laboratory information management system
 - Single inventory management solution

Further Opportunities

- Shared support teams for regional capabilities
- Expansion of Yorkshire and Humber Care Record usage
- Remote monitoring opportunities across the city or ICB with shared care delivery models