



NHS and Big Data

Dr Matthew Howard
mjhoward@amazon.com
International Head Healthcare Data Science
AWS



aws is the cloud computing arm of **amazon**

We use cloud everyday - Including in Healthcare and life science



Genomics
england



Healthier
Lancashire &
South Cumbria



Healthier
**Lancashire &
South Cumbria**

Healthier Lancashire and South Cumbria Integrated Care System (ICS) looks after the health and social care needs of a population of 1.8 million citizens across the North West of the UK

One of the main goals of the ICS is to work collaboratively with all partners involved in care delivery for their geography

The ICS recognized that using cloud technologies allows for better data sharing to improve patient outcomes



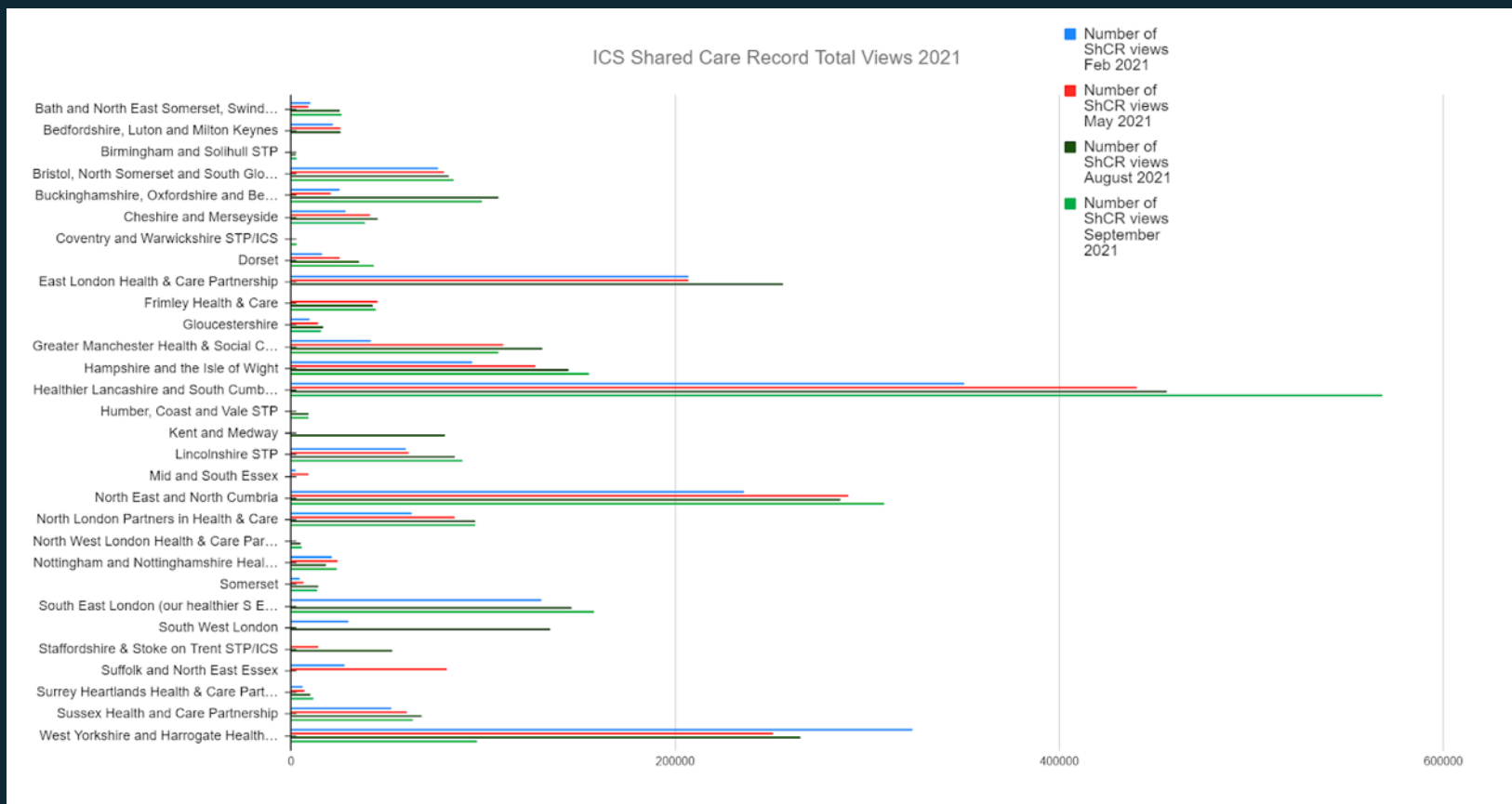
Breaking down patient data silos in UK healthcare with serverless cloud technology

by Gemma McCarthy | on 17 MAY 2022 | in [Customer Solutions](#), [Healthcare](#), [Public Sector](#), [Serverless](#) | [Permalink](#) | [Share](#)

[Comments](#) | [Share](#)



aws.amazon.com/blogs/publicsector/one-small-team-created-cloud-based-predictive-modeling-solution-improve-healthcare-services-uk/



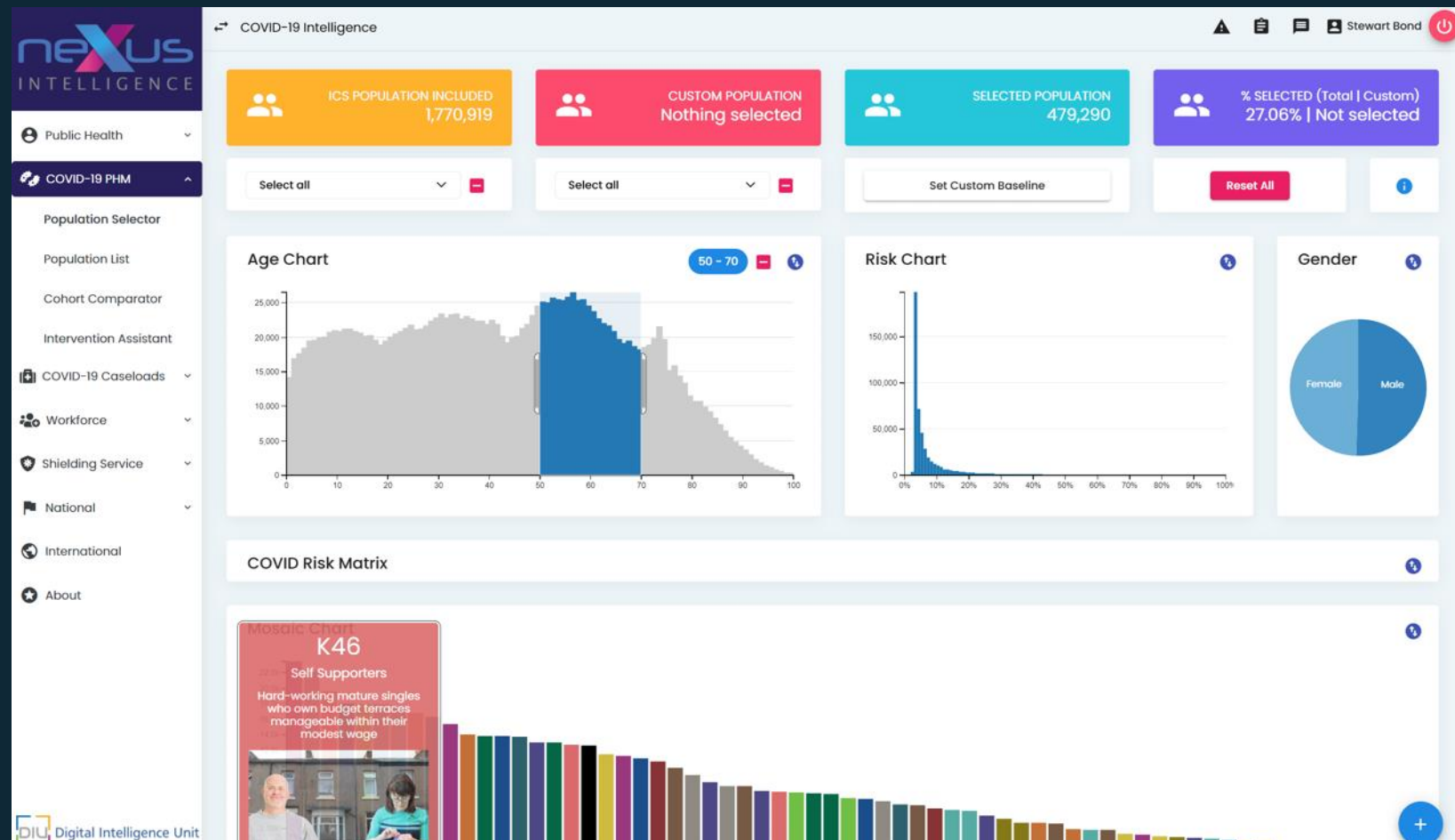


Healthier
Lancashire &
South Cumbria

[AWS Public Sector Blog](#)

One small team created a cloud-based predictive modeling solution to improve healthcare services in the UK

by Gemma McCarthy and Stewart Bond | on 22 SEP 2021 | in [Amazon Elastic Container Service](#), [AWS CodeCommit](#), [AWS Well-Architected Framework](#), [Containers](#), [Customer Solutions](#), [Developer Tools](#), [Healthcare](#), [Public Sector](#) | [Permalink](#) | [Comments](#) | [Share](#)



aws.amazon.com/blogs/publicsector/one-small-team-created-cloud-based-predictive-modeling-solution-improve-healthcare-services-uk/



Genomics
england



Helping the NHS embed genomics into routine healthcare

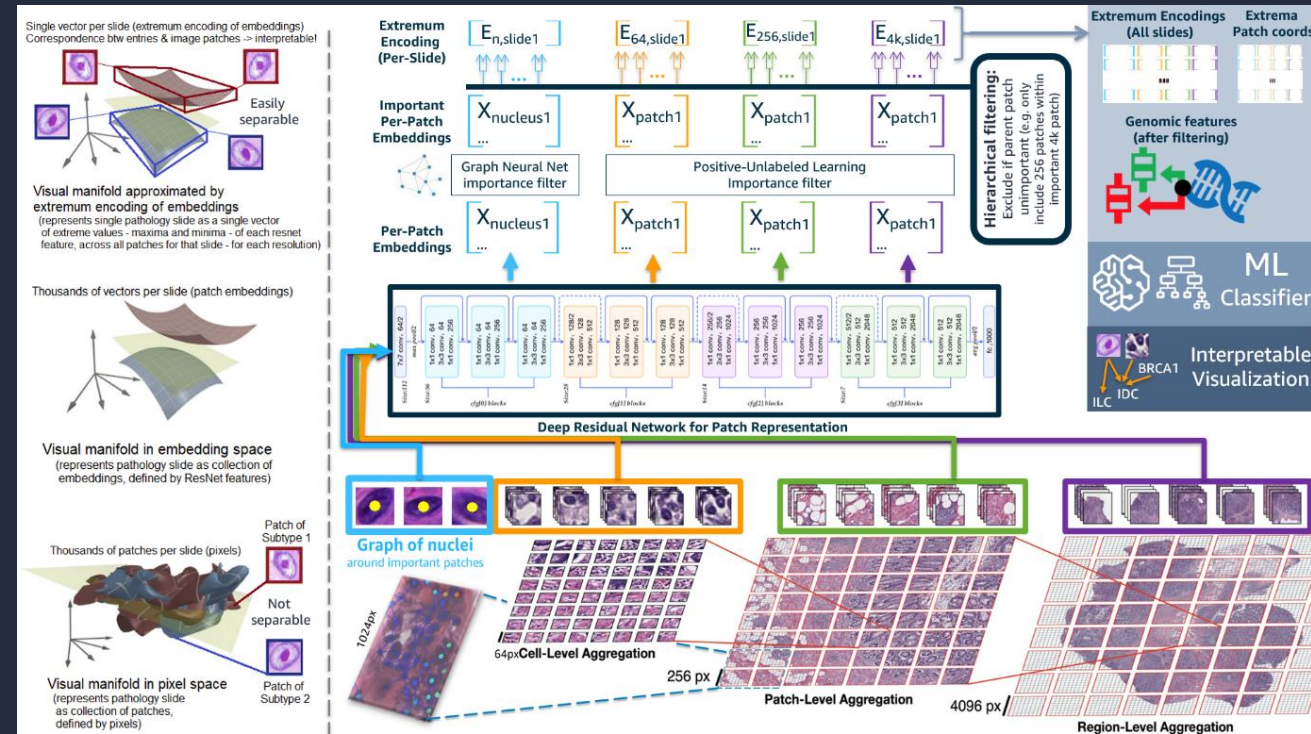
Enabling scientific research via our large genomic database

Helping improve diagnoses and treatments for patients



Lifebit Powers Collaborative Research Environment for Genomics England on AWS

Genomics england



Where to start?

<https://digital.nhs.uk/services/cloud-centre-of-excellence>



Cloud Centre of Excellence (CCoE)

The Cloud Centre of Excellence (CCoE) promotes a best practice approach to drive the adoption of Cloud services. It provides a centralised enablement function and supports Cloud service consumers across NHS Digital and the wider NHS.

Page contents

[Top of page](#)

[Overview](#)

[NHS Cloud community](#)

[Not sure where to start?](#)

[Cloud foundations](#)

[Value delivered](#)

[Additional resources](#)

[Contact details](#)

Cloud Centre of Excellence services website feedback

[Let us know what you think about the Cloud Centre of Excellence \(CCOE\) web pages.](#)



Overview

A centre of excellence develops common solutions, promotes best practice and acquires new skills that are then spread throughout the enterprise to increase the likelihood of adopting new ways of working to realise value and allow teams to become self-sufficient.

We provide support and services to help NHS organisations adopt and optimise Cloud hosting arrangements to drive consistency and efficiency for the wider NHS through a series of guilds and standards.

The NHS Cloud strategy has been shaped by a requirement for government organisations to evaluate public Cloud solutions before other hosting options, as highlighted in the government's [Cloud First policy](#), [Technology Code of Practice](#), [Cloud guide for the public sector](#) and the [NHS Cloud strategy](#).

NHS Cloud community

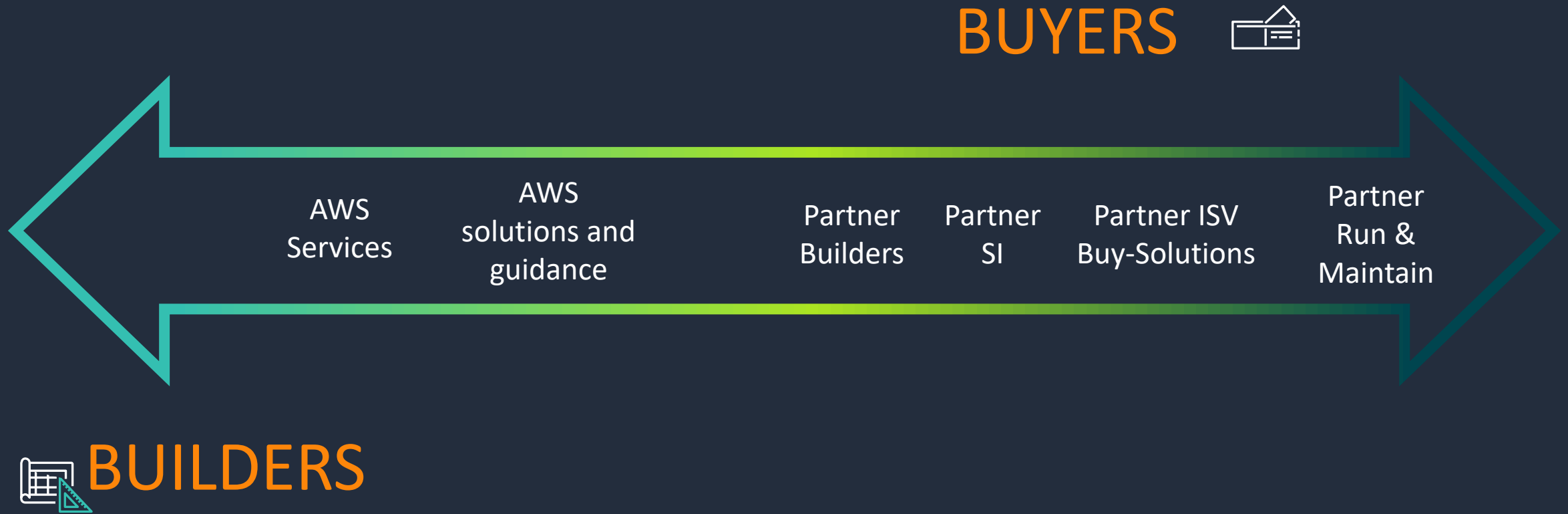
Opening soon, join us for peer support, knowledge, resources and good conversations.

You can [contact us](#) for more information.

Not sure where to start?

Explore the Cloud Centre of Excellence using our Cloud journey guide.

Where to start?



Where to start?



TRAINING



ACCOUNT TEAMS



MIGRATION SUPPORT



PROFESSIONAL SERVICES

SPECIALISTS

REFERENCE ARCHITECTURES

PARTNERS

POCS

**SOLUTION
IMPLEMENTATIONS**

HACKATHONS

Thank you!

mjhoward@amazon.com

