



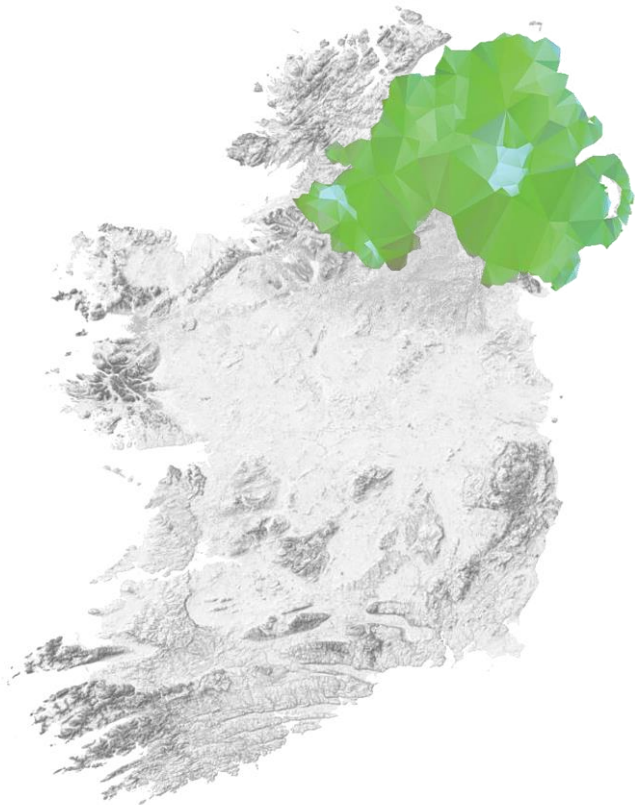
Digital Health & Care  
Northern Ireland

**DELIVERING CARE TOGETHER**



**NORTHERN IRELAND**

**HEALTH AND SOCIAL CARE DIGITAL UPDATE**



**1.9m**

POPULATION

**6**

TRUSTS

**>6,000**

BEDS

**£7.3Bn**

TOTAL BUDGET

**£5.0Bn**

TRUST BUDGETS

**>80,000**

STAFF

**321 / 2,455**

PRACTICES / GPs

**368 / 1,142**

PRACTICES / DENTISTS

**528**

COMMUNITY PHARMACIES

# Problems

Current configuration of Health  
and Social Care unsustainable



**Big**

# Strategy

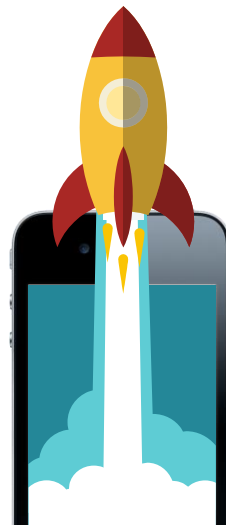
Digital has a role to play in  
changing relationship between  
demand for and supply of services

# Investment

Increasing need for funding –  
historic underinvestment and  
opportunities to innovate

# IT Org Redesign

Convergence, regionalisation,  
localisation, personalisation,  
transformation



## Insight-Driven Care

Staff will have access to data and dashboards on-demand, with information stored in the same place for evidenced based decision making

## Digitally Led

Mobile working and online access will be driven by digitally enabled processes and operations

## World Class Digital Infrastructure

Staff will have access to innovative solutions and flagship programs, underpinned by secure cyber processes.

## Fast Paced and Responsive

We will be agile, adaptive and innovative, utilising fusion teams alongside hubs for innovation and delivery.

## Digital Touchpoints

Patients will be able to live more independently for longer, with digital solutions and technologies that help them feel connected.

## Streamlined Care Journeys

Joined up & integrated processes will make healthcare journeys more efficient, leading to reducing delays and waiting lists.

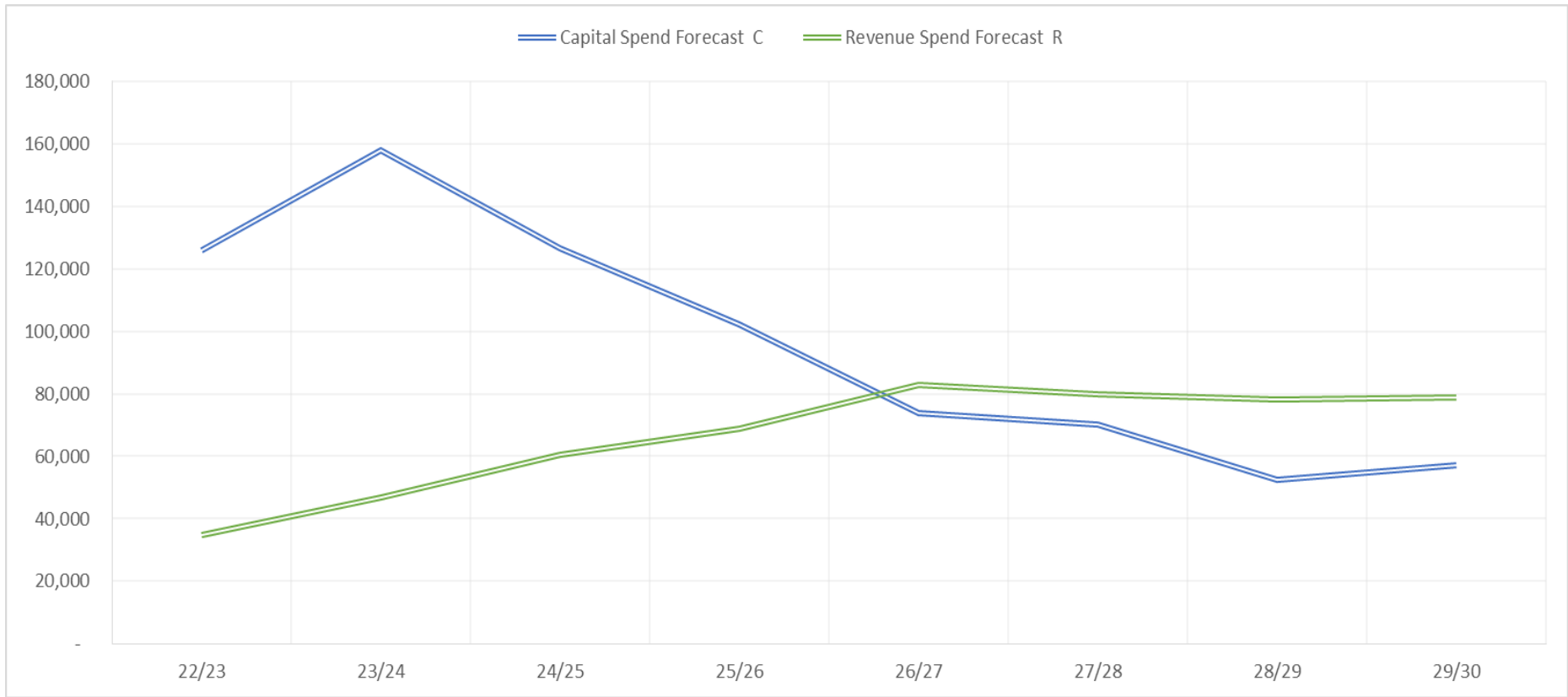
## Personalised Treatment Journeys

Patients will have access to personalised treatment plans that individualise and improve their care

## Cutting edge diagnostic and treatment solutions

Innovation and research partnerships will deliver improved diagnostics and access to new treatments.





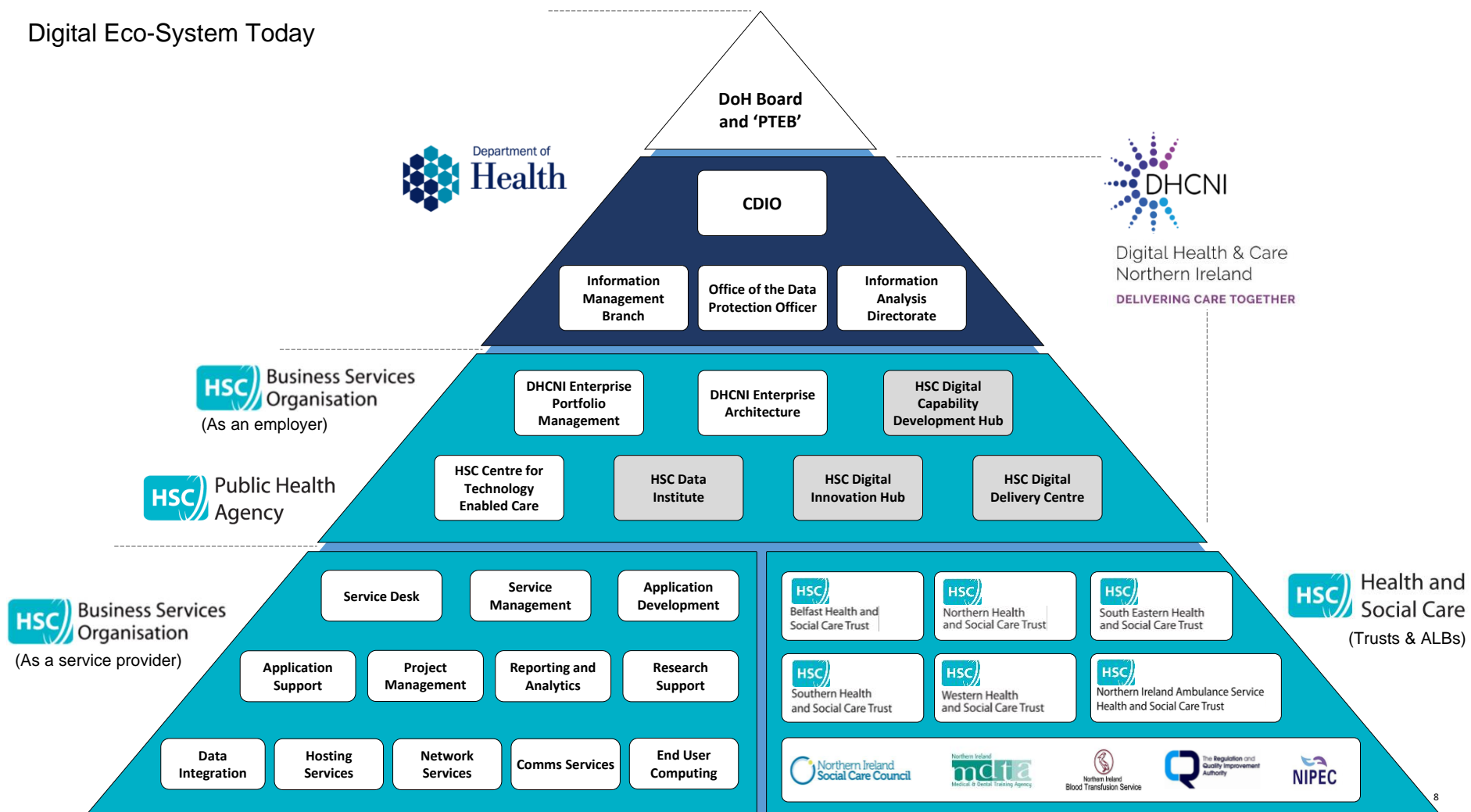
**NI HEALTH & CARE DIGITAL INVESTMENT PORTFOLIKO – Increased Capital & Revenue**

	Q1	Q2	Q3	Q4
<b>Encompass</b> (Epic Everywhere)		◆ User Testing	◆ T1 (SET) Go-Live	
<b>NIPACS+</b> (Sectra Everywhere)	◆ T1 (SET) P1 Go-Live		◆ T5 (BT) P1 Go-Live	
<b>NI LIMS</b> (Clinisys Everywhere)	◆ T1 (BT) Pathology Go-Live		◆ T2 (SET) NILIMS Go-Live	
<b>BPaT</b> (Blood Prod'n & Tracking)		◆ Contract Award		
<b>Equip</b> (ERP to Cloud)	◆ ITA - software	◆ RFP - SI	◆ ITA - SI	
<b>Cyber Sec</b> (SOC & SIEM)		◆ SOC Approved		
<b>Technology Enablement</b>	◆ Implementation Complete			
<b>Digital Workplace</b>			◆ SOC Approved	
<b>Evolve</b> (IT Shared Service)			◆ Detailed Planning	
<b>Digital Id</b> (eMPI to MDM)		◆ Regional Go-Live		



**TOP 10 NI DIGITAL PROGRAMMES – FY23/24 Summary Schedule Snapshot**

# Digital Eco-System Today





# Digital Eco-System After 'Evolve' Programme

