

digitalhealth

REWIRED

LONDON 14-15 MARCH 2023

Headline Sponsors:

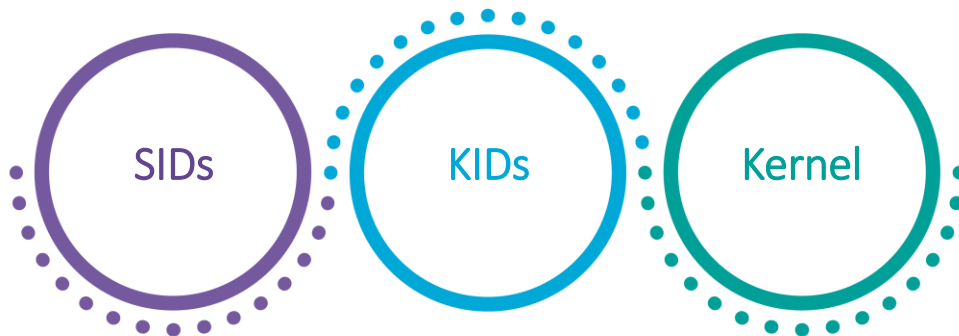


Catherine Dampney & Mark Watson

Director I&T, Digital Programme Director,
NHS SCW & NHS Sussex

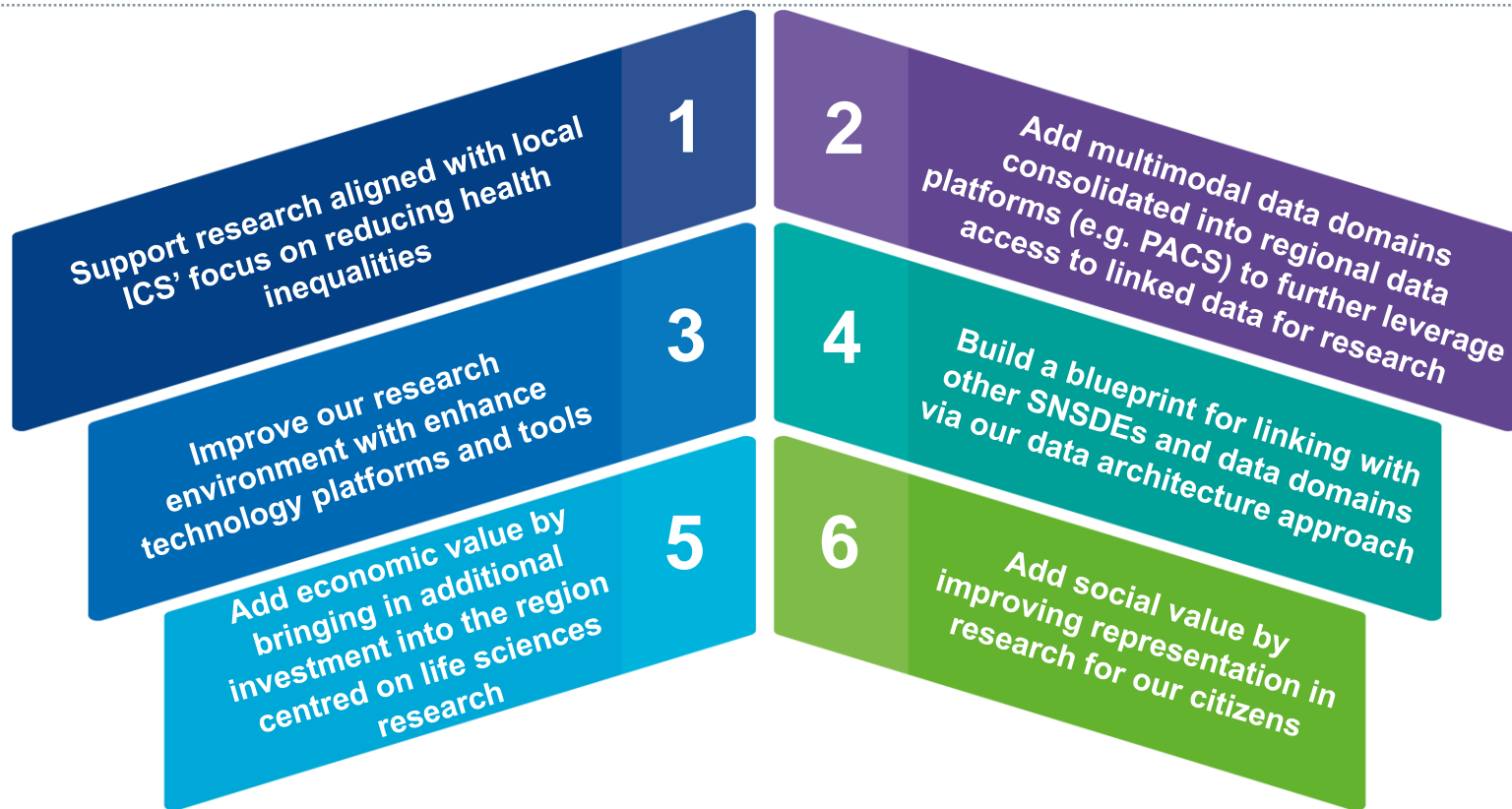
Se(cure)R(earch)C(are &)H(ealth) – Kent + Medway + Sussex

NHS England is investing in the development of an interoperable network of SNSDEs for Research and Development across England. SNSDEs will enable approved researchers secure access to privacy protected NHS data.

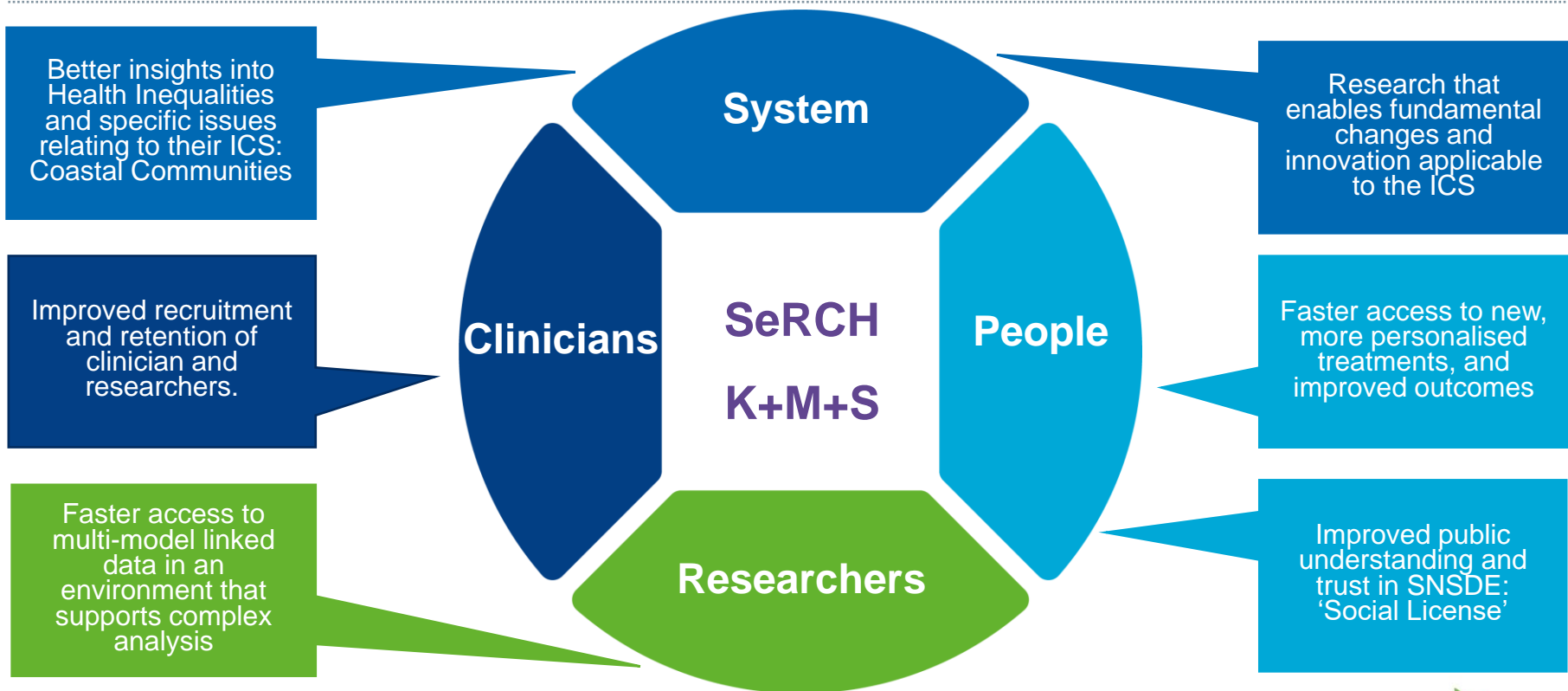


The development of SeRCH K+M+S represented a natural evolution of the data strategies of both Sussex and Kent & Medway ICSs, which have for many years recognised the importance of access to linked multimodal data and the benefits this brings by enabling innovation in the delivery of care.

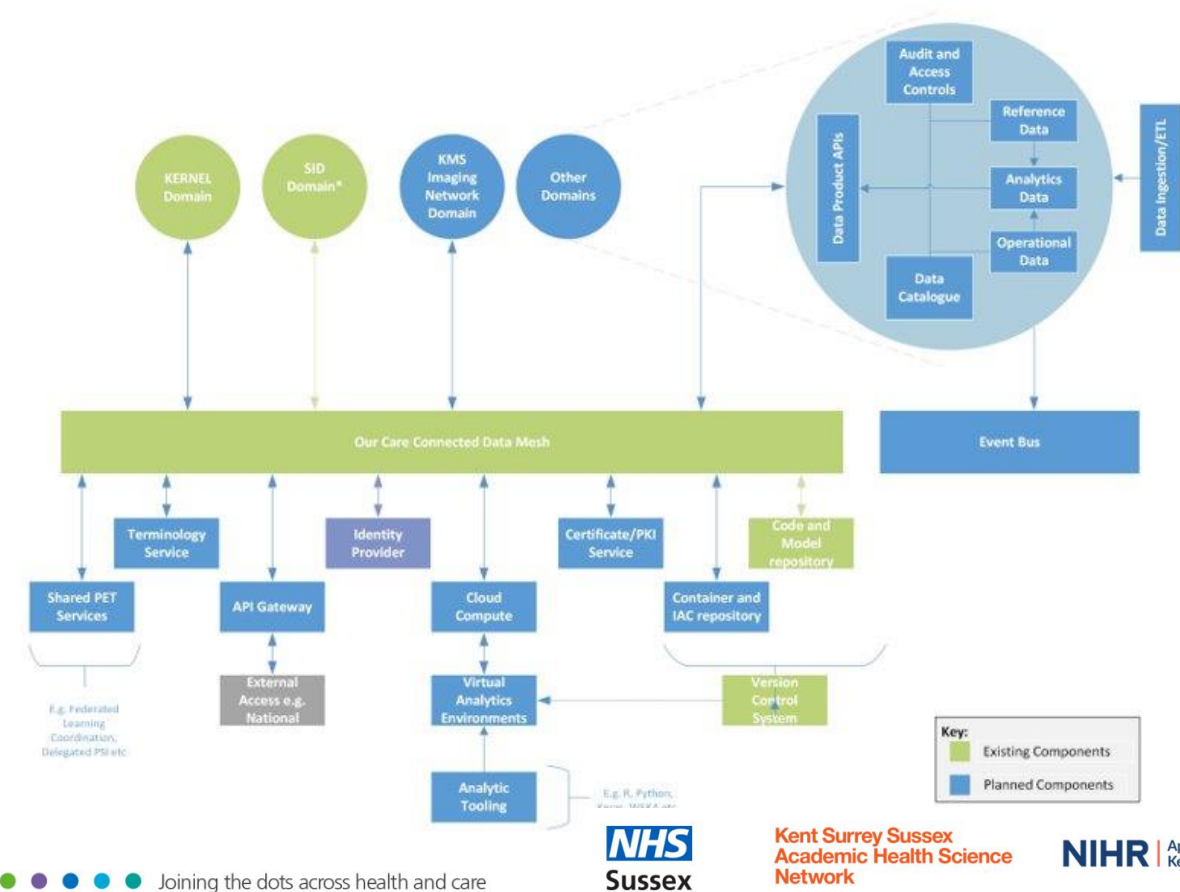
Strategic Objectives



What are the Benefits?



How will we deliver this?



The KMS SNSDE is based on strong foundations of:

- Existing population level linked data for research
- Common data repositories for images, pathology, primary care data and diagnostics
- Common flexible and scalable architecture and experience to deploy a federated environment
- Cloud environment and open source as a strategy
- Sussex OCC Data Mesh Architecture

Thank you



SCW

Catherine Dampney

@cjdampney

catherine.dampney@nhs.net