



Health
Innovation
Manchester

The GM Care Record and the ICS

Dr. Paula Bennett
RN (Adult) RN (Child)
Chief Nurse / CNIO
Health Innovation Manchester

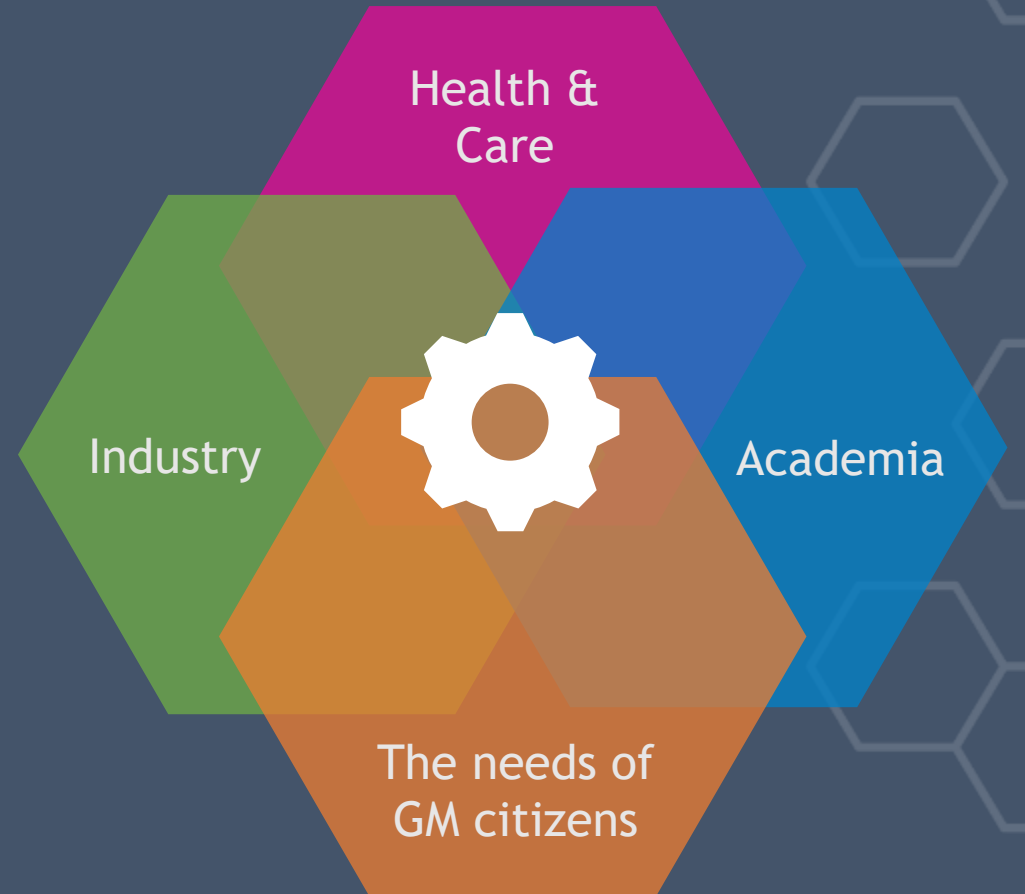


Health
Innovation
Manchester

We work with innovators to

discover, develop and deploy

new solutions that improve the health
and wellbeing of Greater Manchester's
citizens.





NHSX - ICS Functions



Ensure digital strategies have wide clinical input



Development of ICS-wide shared care record



Frontline staff have the information to do job safely



Sharing care plans, test results, medications etc.



Care pathway redesign and transformation



Population health intelligence platform

“All care systems should look to deploy a shared care record - allowing the safe flow of patient data between care settings, and the aggregation of data for population health”

Sir Simon Stevens, NHS Chief Executive, in a letter to NHS leaders, 31st July 2020.



NHSX - ICS Functions



Ensure digital strategies have wide clinical input



Development of ICS-wide shared care record



Frontline staff have the information to do job safely



Sharing care plans, test results, medications etc.



Care pathway redesign and transformation



Population health intelligence platform



The
GM Care Record



The GM Care Record

- Easy access to patient information is critical to support decision-making for health and care workers - especially during the pandemic.
- GM Care Record supports data sharing for direct care and treatment for the city-regions 2.8m citizens.
- Tech. development accelerated in response to pandemic, measured in weeks rather than years.



**Remote
monitoring:
COVID19, Heart
Failure,
Maternity**



**Data Sharing,
Care Pathway
Transformation,
Research**



**Population
Health and
Analytics
Platform**



Usage of the GM
Care Record during
the pandemic

Pre-Pandemic

4,926 users

Frontline users in health and care
March 2020

17,723 logins

User logins
March 2020

69k

March 2020

Patient
Records
Accessed

Zero

Usage of deidentified
GMC data
for research or
secondary uses.

Today

13,068 users

Frontline users in health and care
Dec. 2021

60,949 logins

User logins
Dec. 2021

141k

Dec. 2021

Patient
Records
Accessed

15

COVID-19 related
research studies approved
working with the
University of Manchester.

Full BI/Analytics platform.



Progress made on the GM Care Record's accelerated rollout

Pre-Pandemic

10 localities

with locality-based shared care records at various stages of development - barriers to sharing across localities.

2.2m Patient Records

From 297 GP Practices (67%)
March 2020

>500 Data Controllers

No coherent approach to IG across GM organisations.

Today

1 city-region

wide care record accessible for direct care regardless of geography or organisation.

3.1m Patient Records

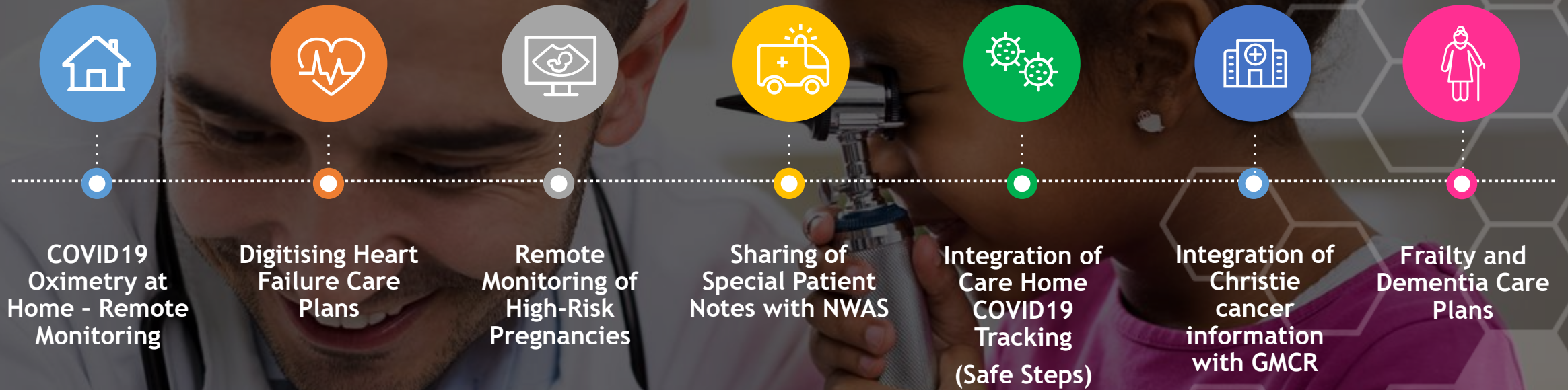
From 443 GP Practices (99.6%)
Dec. 2021

1 DPIA

for all GM health & care organisations for direct care



Transforming care pathways...





Advancing digital and data across an Integrated Care System

Build smart digital and data foundations

1. Have clear Board accountability for digital
2. Have a system wide digital transformation plan
3. Built digital and data literacy
4. Invest in infrastructure

Connect health and care services

1. Shared care record
2. Tools for collaborative working
3. Standards based

Use digital to transform care

1. Re-imagine care pathways
2. Cross systems intelligence and analytics functions
3. Transparency of information

Put citizens at the centre of care

1. Citizen centric digital channels
2. Remote monitoring
3. Effective data sharing

‘Data and technology have played a vital role helping the NHS and care respond to the pandemic. They will be at the heart of creating effective local systems, helping local partners in health and social care work together. They can help improve productivity and patient outcomes, reduce bureaucracy, drive service transformation and stimulate improvement and research. ‘

NHS England, next steps document



Health
Innovation
Manchester

healthinnovationmanchester.com

@HealthInnovMcr

#WeAreHInM