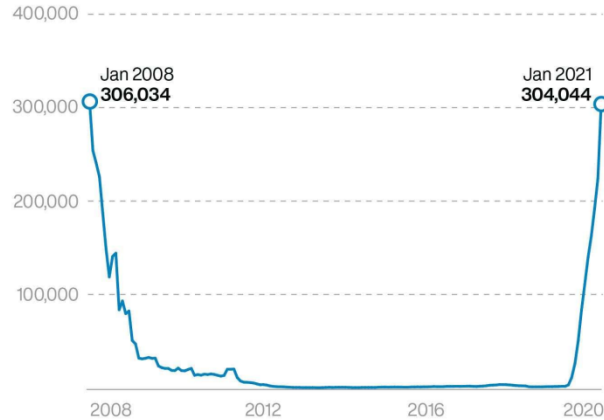


# AI on the clinical floor

Basab Bhattacharya

# WE NEED HELP!!!!!!!!!!

Patients in England waiting more than 52 weeks to start hospital treatment



PA graphic. Source: NHS England

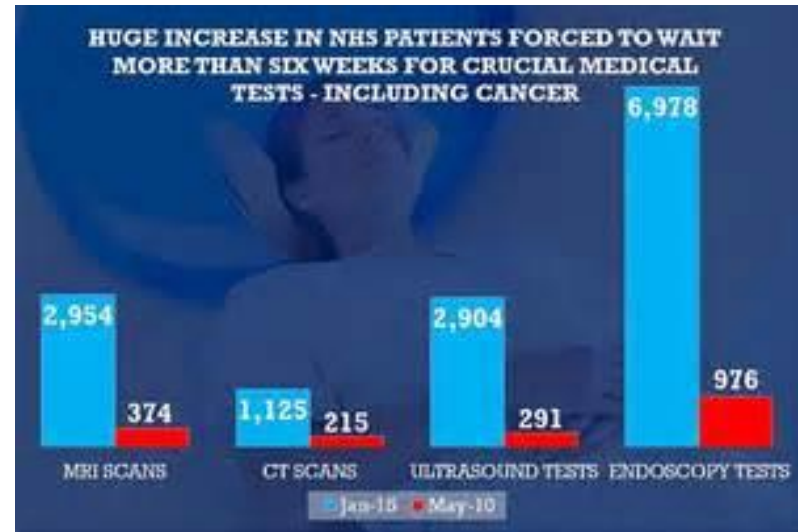
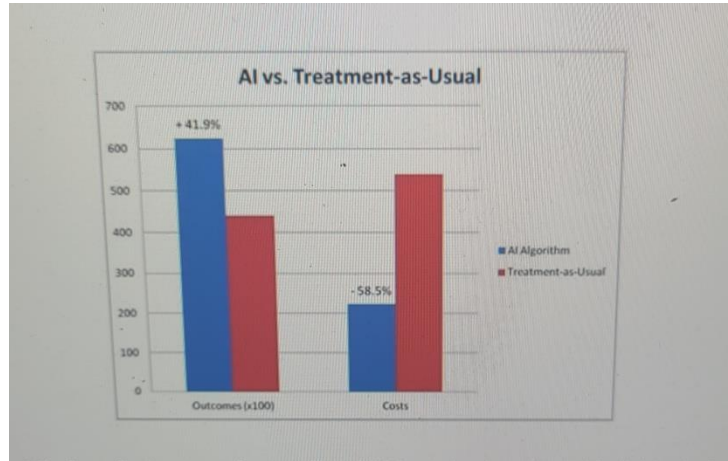


Table 4: Additional imaging workforce requirements

Imaging workforce	Additional requirement
Radiologists	2,000
Advanced practitioner/ reporting radiographers	500
Radiographers	3,500
Assistant practitioners	2,500
Admin and support staff	2,670
Physicists	220

# To The Rescue



Harvard Business Review

Diversity Latest Magazine Ascend Topics Podcasts Video

Technology And Analytics

## AI Can Outperform Doctors. So Why Don't Patients Trust It?

by Chiara Longoni and Carey K. Morewedge

October 30, 2019

## AI 'outperforms' doctors diagnosing breast cancer

Fergus Walsh  
Medical correspondent  
@BBCFergusWalsh

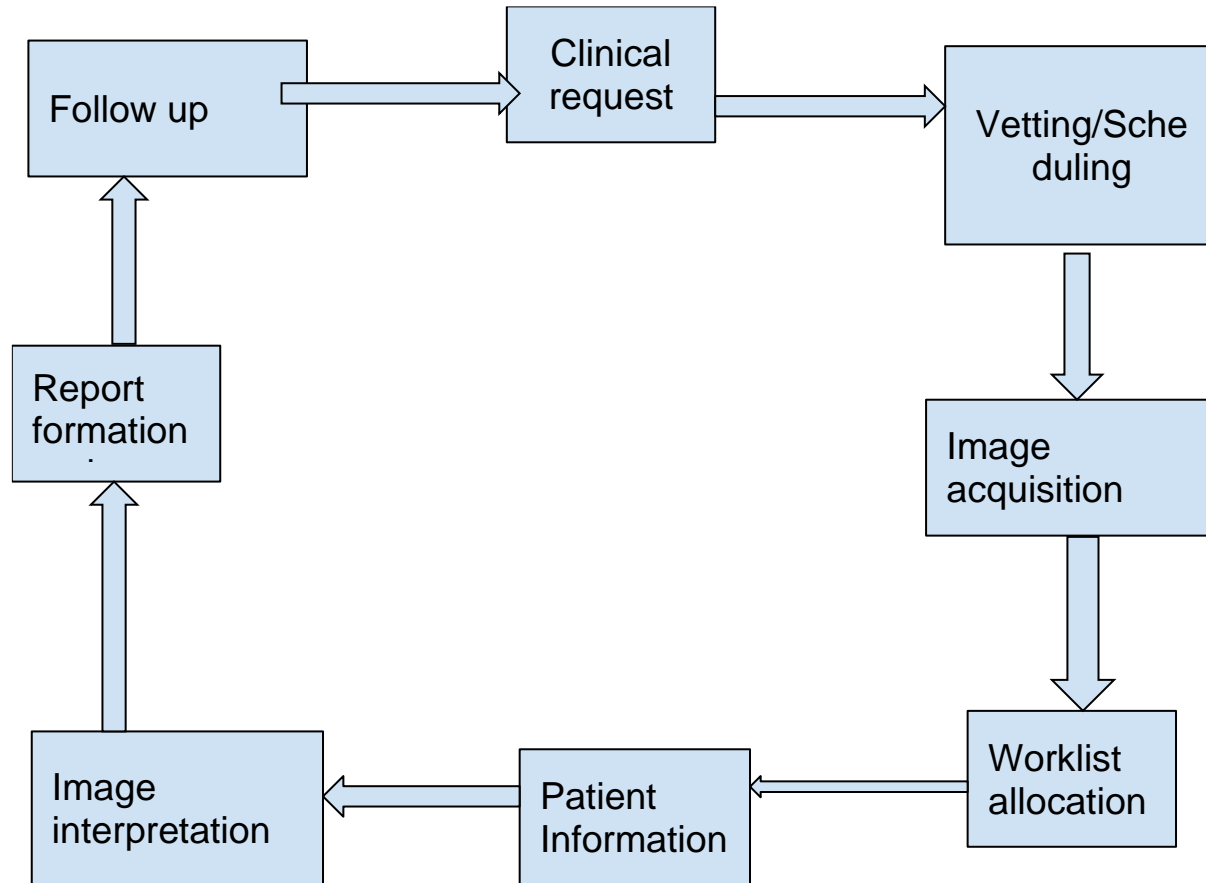
© 2 January 2020

GETTY IMAGES

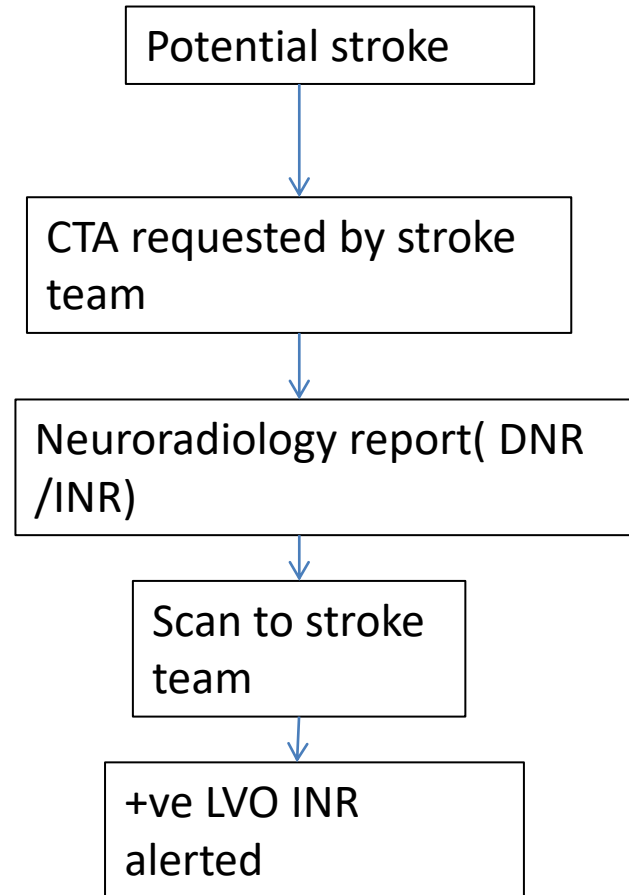
AI was as accurate as two doctors working together



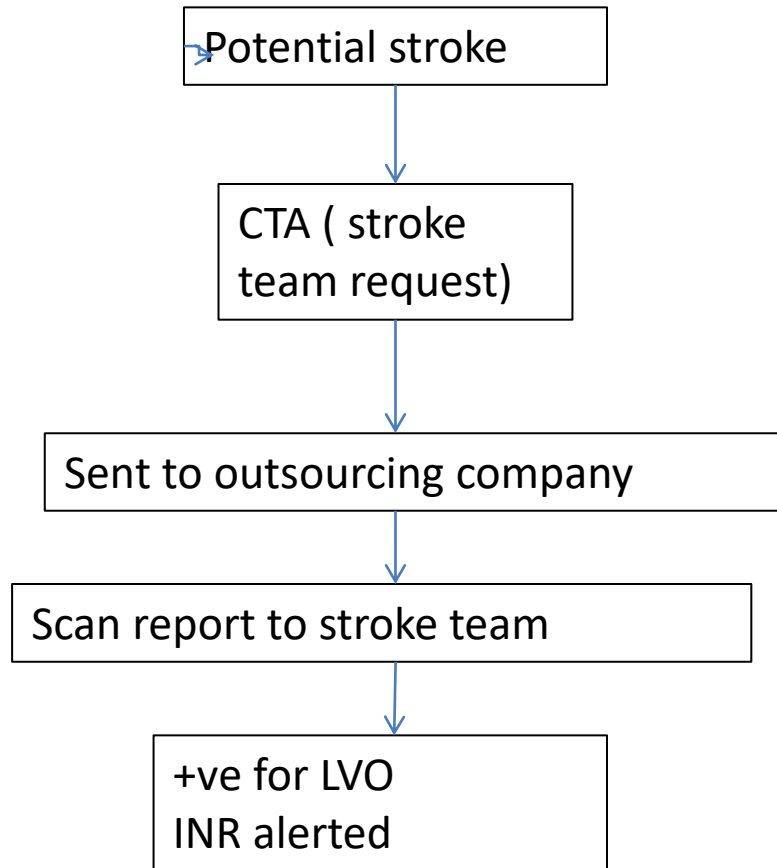
# Where to begin....



# Inhouse ?



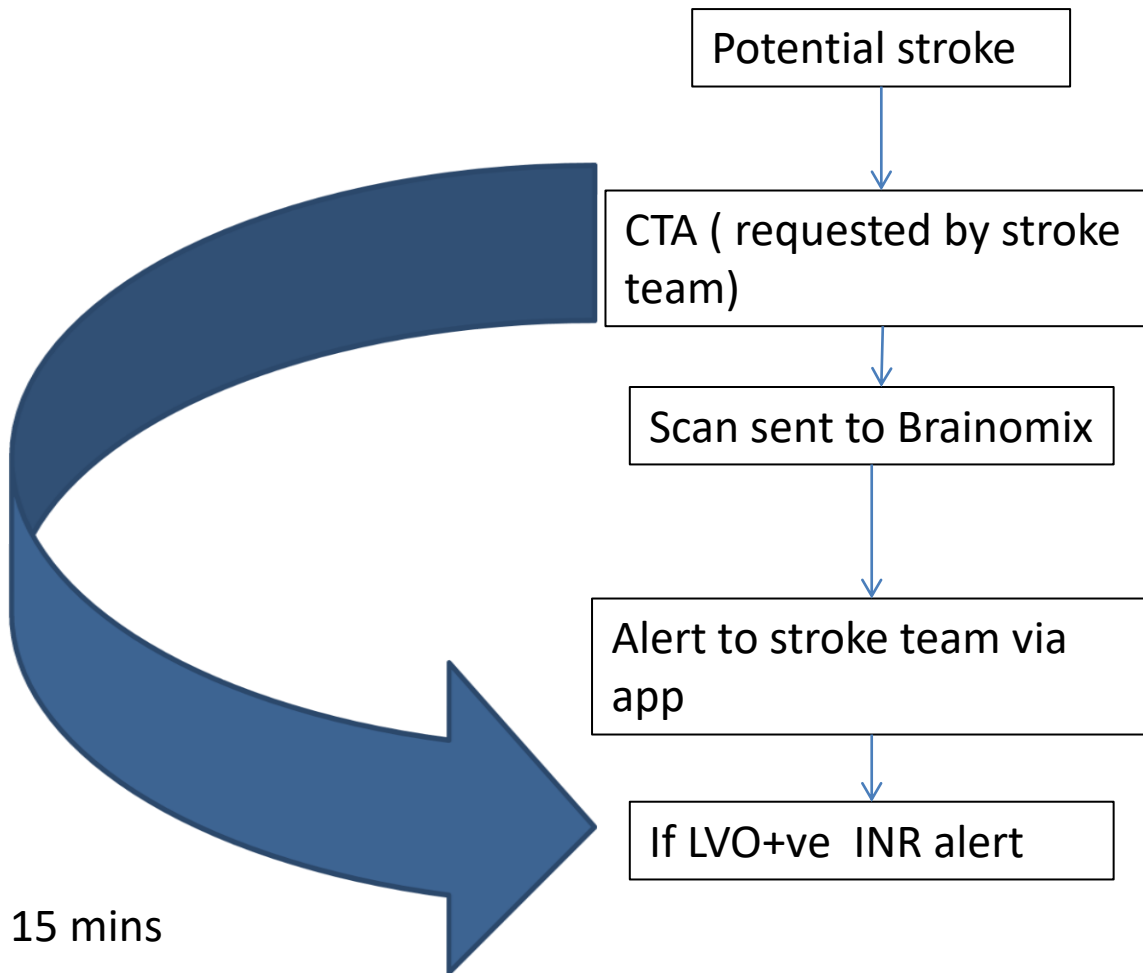
# Outsource it?



60min



# Brainomix pathway



15 mins



# AI in the DGH

- Set up a Work/ SIG group
- TOR to agree rules.
- Assess what the current challenges are.
- Don't concentrate on the sexy topics.
- Network with local Trusts

# Life gets in the way



# Fighting the last war



Not always the correct tool..



# Summary

- What is your need?
- Get resources- good will runs out
- Don't get caught up by hype.
- Learn
- Ask around.
- Get started