

AIDE

A new operating system for the hospital

Haris Shuaib

AI Transformation Lead
The London AI Centre

@AI4VBH @haris_shuaib



Cross the gulf of innovation

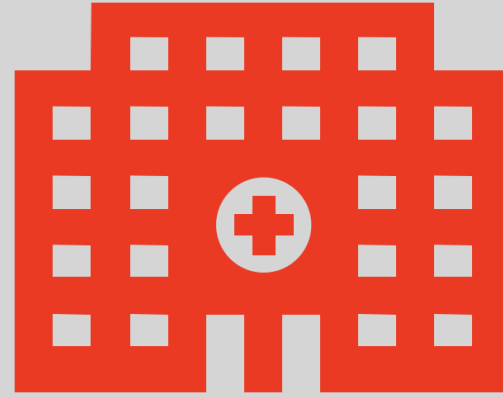


AI

SKILLS

TECHNOLOGY

INVESTMENT



NO PEOPLE

NO POLICY

NO PLATFORMS

NO VALUE

Platform challenges for medical AI



Deployment of more and more AI models becomes an increasingly complex task to manage, creating large technical debt.



Interoperability is a particular challenge for healthcare due to heterogeneity in clinical systems and patient data models.

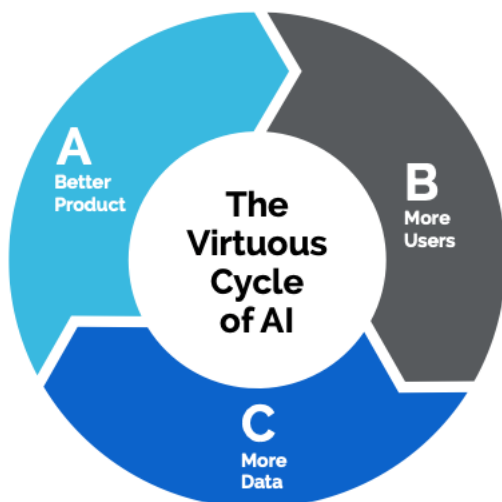


Evidence generation needs to be at the centre of the design, since many deployments of AI still require research and analysis of their performance.

An enterprise approach to AI

Break away from medical specialty silos

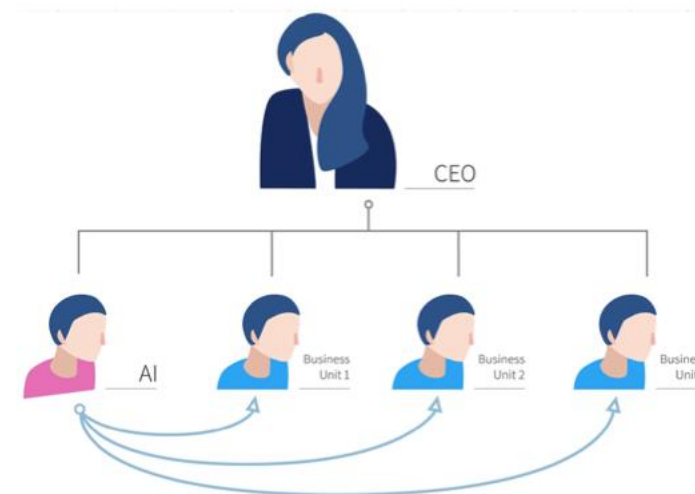
Lowering costs around staff and support



Enterprise-wide view

Managing technical risks

Continuous improvement



AIDE

A new OS for the hospital



1895



1995



2012



2021

1. One of the earliest photographic plates from Roentgen's experiments was a film of his wife, Bertha's hand with a ring, produced on Friday, November 8, 1895.
2. Setzner1337, CC0, via Wikimedia Commons

AIDE

A new paradigm for developers



One phone, one app



A platform for innovation



AIDE

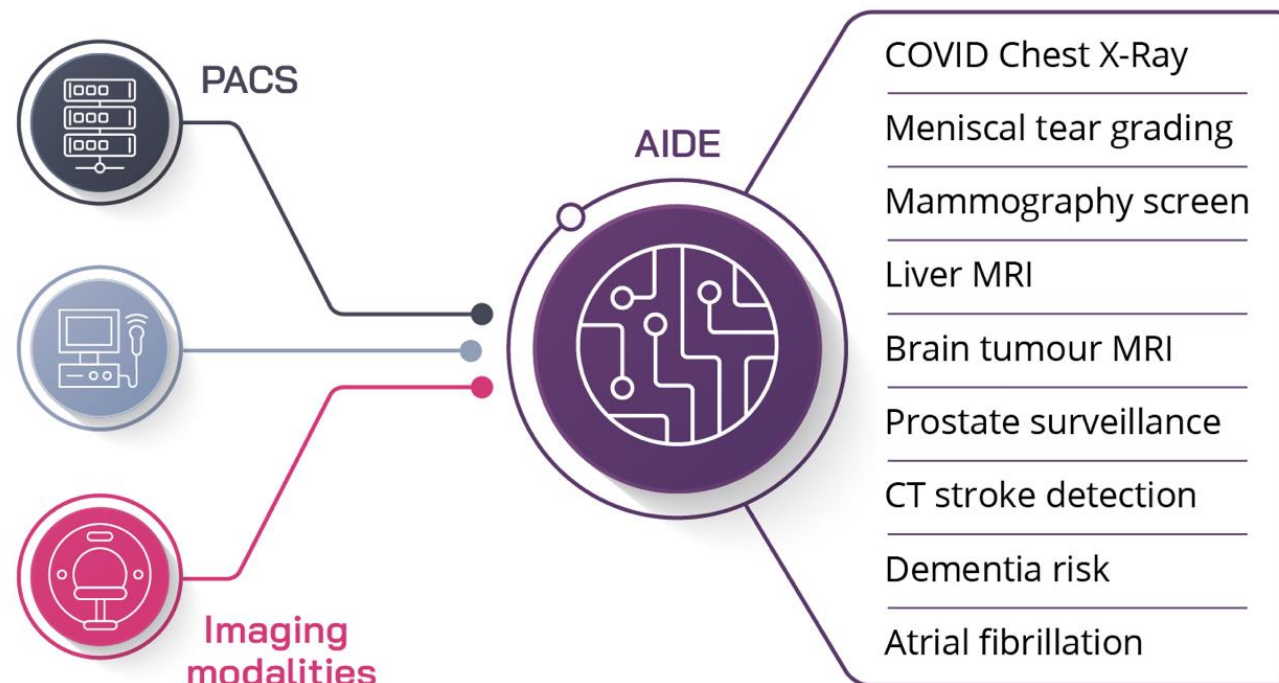
AI Deployment Engine

Integrates with clinical information systems (DICOM, FHIR, HL7)

AIDE App Store to share and distribute AI applications.

Enterprise-wide platform for the management and deployment of AI.

Help manage technical, clinical and regulatory risks around AI deployment.



Demo

Model outputs for clinical review

Patient Name: Anonymous Female 1956 DoB: 26/03/1956 PatientID: ANON7PIQEE1QE Sex: F Study Date: 30/10/2019 OPEN PIPELINE ACCEPT REJECT

Work List

Search Tasks

Anonymous Female 1956
reporting - 0.3
Mode: CU
Received: 26/10/2021 13:19

Anonymous Female 1956
reporting - 0.3
Mode: CU
Received: 26/10/2021 12:47

Anonymous Male 1980
reporting - 0.3
Mode: CU
Received: 16/09/2021 18:29

CT (288)
0.625mm

DOC (1)
0.625mm

SLICE: 1

HIDE METADATA >

SpecificCharacterSet
ISO_IR 100

ImageType
ORIGINAL\PRIMARYA...

SOPClassUID
1.2.840.10008.5.1.4.1...

SOPInstanceUID
1.2.276.0.7230010.3.1...

StudyDate
20191030

SeriesDate
20140904

AcquisitionDate
20140904

StudyTime
060329

Modality
CT

InstitutionName
KCH Clinical Research ...

ReferringPhysician...

AIDE is a hardware & software solution facilitating the deployment, integration & management of AI algorithms in the clinical workflow

Managing the clinical risk

Clinical review

Earlier feedback to
developers

Closing the feedback
loop

The screenshot displays a web-based interface for reviewing AI model outputs. At the top, a header bar includes the 'YAI CENTRE for AI in Healthcare' logo and the title 'Model outputs for clinical review'. Below this, a patient information bar shows: Patient Name: Anonymous Female 1956, DoB: 26/03/1956, PatientID: ANON7PIQEE1QE, Sex: F, Study Date: 30/10/2019. Action buttons for 'OPEN PIPELINE', 'ACCEPT', and 'REJECT' are on the right. A left sidebar contains a 'Work List' with a search bar and three task entries for 'Anonymous Female 1956' and 'Anonymous Male 1980', each showing a reporting score of 0.3 and a 'Mode: CU'. The main area features a large axial CT scan slice. To the left of the slice is a 'HIDE SERIES' panel listing 'CT (288)', 'DOC (1)', and two more 'DOC (1)' entries, each with a thumbnail and a '0.625mm' resolution. To the right is a 'HIDE METADATA' panel listing various DICOM-style metadata fields such as 'SpecificCharacterSet', 'ImageType', 'SOPClassUID', 'StudyDate', and 'Modality'. A 'DOWNLOAD STUDY' button is located above the main image. The bottom of the main image area indicates 'SLICE: 1'.

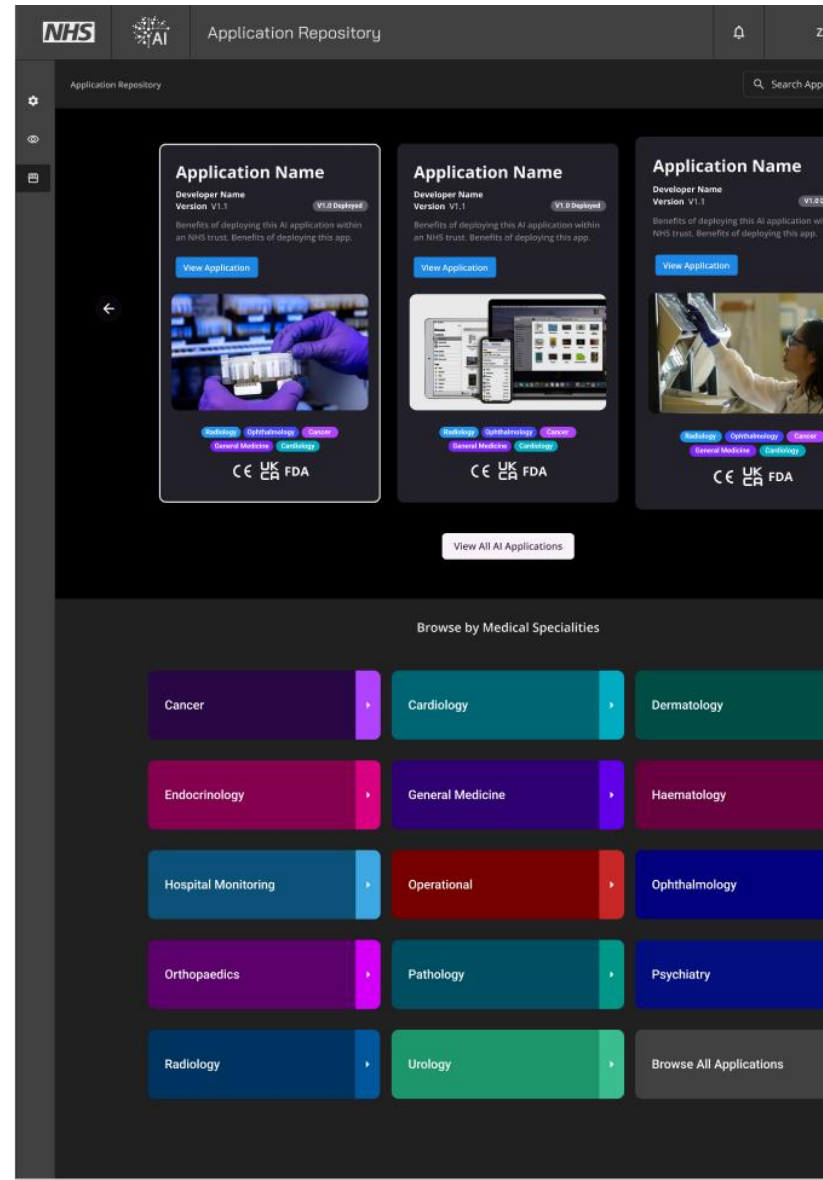
Scaling up digital clinical trials

Deploying in shadow mode

QA & research mode

Centralised reporting

App store with associated documentation



Trust Availability

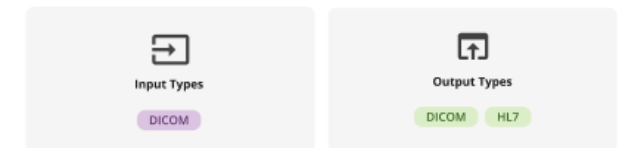
✓ This application is available to all trusts .

System Requirements

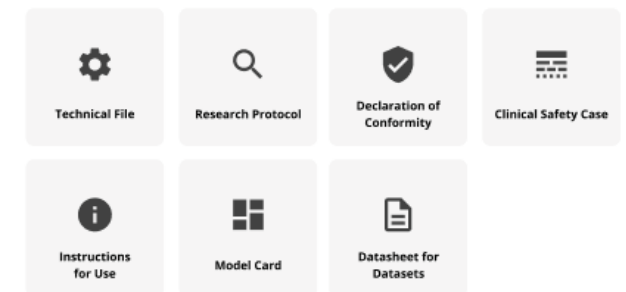
Blaciustrum asit, ut ulpa perrum inum di dolorib eatur? Em harunt exceperre ilicaborpore nonsecus, sum voluptam elique dolupta digendemos es as.



Input and Output Types



Files



The rollout across London and the Southeast of England

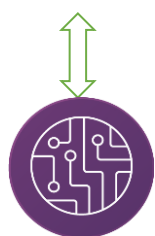
AI lifecycle management

Cloud-ready architecture

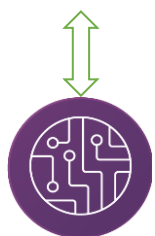
NHS "FUBU" repository

Package algorithms with compliance documents

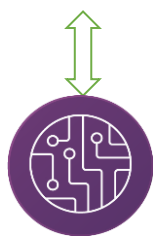
Complex and composable pipelines



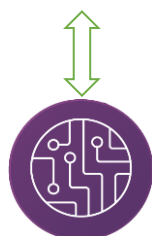
NHS
Imperial College Healthcare
NHS Trust



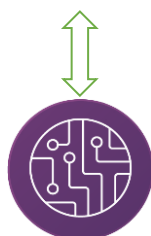
NHS
South London and Maudsley
NHS Foundation Trust



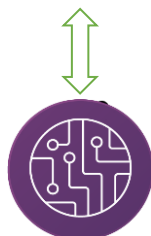
NHS
Brighton and Sussex
University Hospitals
NHS Trust



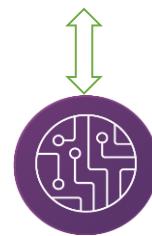
NHS
King's College Hospital
NHS Foundation Trust



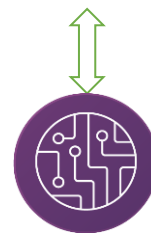
NHS
University College
London Hospitals
NHS Foundation Trust



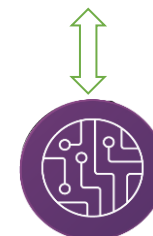
NHS
Guy's and St Thomas'
NHS Foundation Trust



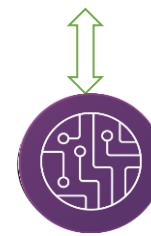
NHS
Lewisham and Greenwich
NHS Trust



NHS
Royal Brompton
& Harefield
NHS Foundation Trust



NHS
Barts Health
NHS Trust



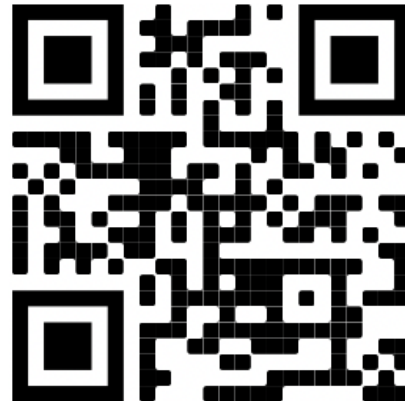
NHS
East Kent
Hospitals University
NHS Foundation Trust

Join us

Developers

We have a pipeline of 20+ AI applications to be deployed

If you are interested in joining the community: use QR code



AIDE

A new operating system
for the hospital

Haris Shuaib

AI Transformation Lead
The London AI Centre

@AI4VBH @haris_shuaib

